

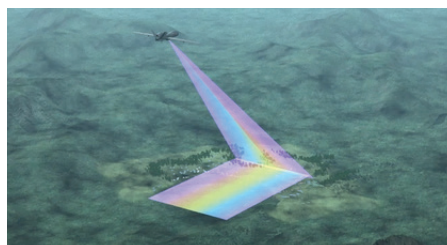
MS-177 FAMILY OF SYSTEMS

HIGH-ALTITUDE, LONG-RANGE TARGET IDENTIFICATION

Multispectral technology for high-resolution ISR

Collins Aerospace MS-177 family of systems are next-generation, long-range ISR sensors that use proven, advanced multispectral imaging technology. High resolution imagery from our MS-177 provides precise identification of targets as well as situational awareness, day or night, on land or at sea.

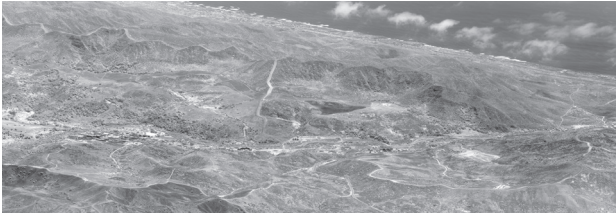
Collins expanded the MS-177 capabilities by adding three visible bands, bringing unique potential to the MS-177 family of systems. Our enhancements complement analysts' native interpretation and



exploitation abilities, and provide a unique opportunity for warfighters identifying their most challenging target sets.

KEY FEATURES & BENEFITS

- Long-range, passive target detection and identification
- Land and maritime missions, day and night
- Provides actionable intelligence
- Supports platform operation in permissive and A2AD environments
- Compatible with various airborne ISR platforms
- Open Mission Systems (OMS) compliant



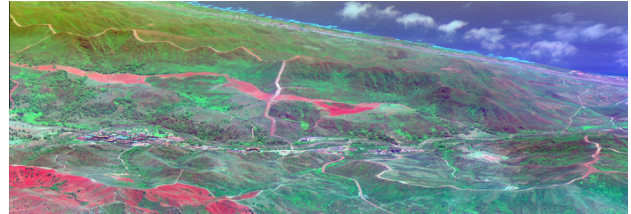
Near IR



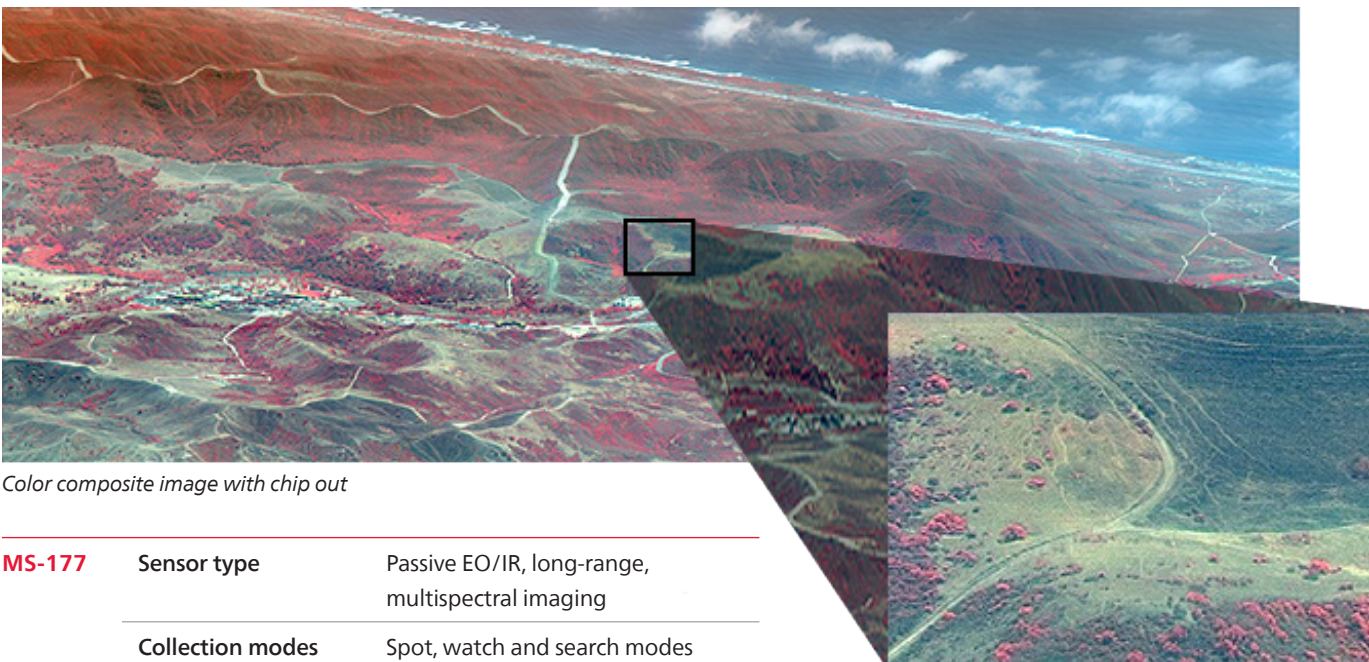
Short-wave IR



Mid-wave IR



MSI color composite



Color composite image with chip out

MS-177	Sensor type	Passive EO/IR, long-range, multispectral imaging
	Collection modes	Spot, watch and search modes
	Field of regard	$\pm 90^\circ$ roll and up to $\pm 25^\circ$ pitch
	Area coverage rate	Up to 37,000 km ² /hr
	MSI spectral bands	Seven (MS-177) or 10 (MS-177A), including SWIR and MWIR
	SWaP	Weight: 538 lbs Volume: Cylinder 34.75" max diameter, 66" length Power (AC): 1750 VA average

Specifications subject to change without notice.



COLLINS AEROSPACE

+1.978.303.6700

collinsaerospace.com/airborneISR