

# SERVICE NEWSLETTER

**SUBJECT:** Pneumatic De-icer Warranty Claims - ATA Chapter 30

## TRANSMITTAL INFORMATION SUMMARY

### SUMMARY:

This is revision 4 of Service Newsletter (SL) 05-064 for the Goodrich pneumatic de-icers.

This revision updates sections as required.

Black bars in the margins indicate the changes.

Replace all previous copies with Revision 4, Dated Jan 06/23.

### REVISION HISTORY:

REVISION	DATE OF RELEASE
Initial Issue	Jul 28/05
Revision 1	Aug 13/07
Revision 2	Apr 15/10
Revision 3	Dec 02/16
Revision 4	Jan 06/23

### COLLINS AEROSPACE PROPRIETARY

NEITHER POSSESSION NOR RECEIPT OF THIS DOCUMENT FROM ANY SOURCE CONSTITUTES PERMISSION TO USE. USE, COPYING, AND FURTHER DISCLOSURE FOR ANY PURPOSE WITHOUT EXPRESS WRITTEN PERMISSION FROM COLLINS AEROSPACE MAY RESULT IN CRIMINAL AND/OR CIVIL LIABILITY.

**GOODRICH CORPORATION, A PART OF COLLINS AEROSPACE  
SERVICE NEWSLETTER**

We try to supply Service Newsletters that are free of errors, but some can occur. If a problem is found with this Service Newsletter, you can send the necessary data to Collins Aerospace. When you report a specified problem, give short instructions. Include the Service Newsletter number, the paragraph or figure number, and the page number.

To send data to Collins Aerospace about this Service Newsletter:

Address: Collins Aerospace  
Interiors - Ice Protection Systems & Heated Floor Panels  
1555 Corporate Woods Pkwy  
Uniontown, OH 44685-8799, USA

Email: [INTTechPub@utas.utc.com](mailto:INTTechPub@utas.utc.com)

To get access to more technical publications on your account, please visit:

Website: <https://collinsaerospace.com/Technical-Publications>  
Email: [INTTechPub@utas.utc.com](mailto:INTTechPub@utas.utc.com)

To access the latest technical publications, please visit:

Website: <https://collinsaerospace.com/Technical-Publications>

For technical support, please contact Collins Aerospace Interiors Customer Response Center:

Website: <https://gcs.beaerospace.com/Request/Technical>  
Email: [betechsupport@beaerospace.com](mailto:betechsupport@beaerospace.com)

For spares orders, please contact:

Website: [https://collinsaerospace.com/support  
customerportal@collins.com](https://collinsaerospace.com/support/customerportal@collins.com)  
Phone: +1 877-808-7575

For Aircraft on Ground (AOG) support, please contact:

Website: <https://collinsaerospace.com/support>  
Email: <https://gcs.beaerospace.com/Request/AOG>  
Phone: U.S. Toll Free: +1 888-232-2594  
U.S. Local: +1 336-397-4478  
International: +63 43-430-0048  
International: +44 1525-574-007

## 1. Planning Information

### A. Effectivity

- (1) Goodrich pneumatic de-icers returned for warranty consideration.

### B. Reason

- (1) To define warrantable defects versus non-warrantable damage to pneumatic de-icers, as well as describe consistent terminology to describe defects.

**GOODRICH CORPORATION, A PART OF COLLINS AEROSPACE  
SERVICE NEWSLETTER**

- (2) To clarify the warranty timeframe for pneumatic de-icers and simplify the procedure for returning pneumatic de-icers for warranty claims.

C. Description

- (1) Evaluation of the returned de-icer is difficult and time-consuming when the damaged area is not marked and/or the de-icer is received in pieces and/or stuck together with remnants of installation adhesive. Information regarding flight hours, time since installation, and the nature of the problem may be missing or misleading. This Service Newsletter provides guidelines for return of pneumatic de-icers, including proper nomenclature and required information to support a warranty claim.

D. Affected Documentation

- (1) 30-10-31, Goodrich Pneumatic De-Icer Installation, Maintenance, and Repair Manual.

E. Required Materials

- (1) None - information only.

**2. Accomplishment Instructions**

A. Warranty Timeframe

NOTE: The warranty timeframe may be different for pneumatic de-icers installed on certain aircraft models where special terms have been negotiated with the aircraft manufacturer.

- (1) Goodrich pneumatic de-icers are warranted to be free of defects in material and workmanship subject to the following conditions. Pneumatic de-icers that are beyond the warranty time frame should not be returned for warranty consideration.
  - (a) Business \* and General Aviation Aircraft: 5 years or 3,000 flight hours from date of installation, whichever occurs first.
  - (b) \* Business aviation is defined as 14 CFR Part 121 or Part 135 operations and less than 19 seats or less than 19,000 lb MTOW. Regional Aircraft \*\*: 3 years or 4,000 flight hours from date of installation, whichever occurs first.  
  
\*\* Regional aircraft is defined as 19 seats or greater or in excess of 19,000 lb MTOW.
  - (c) Engine Inlet: 2 years or 3,000 flight hours from date of installation, whichever occurs first.

The full warranty statement can be found at <https://www.goodrichdeicing.com/services/catalogs>

B. Warranty Coverage

- (1) The Goodrich pneumatic de-icer warranty covers defects in material and workmanship.

**GOODRICH CORPORATION, A PART OF COLLINS AEROSPACE  
SERVICE NEWSLETTER**

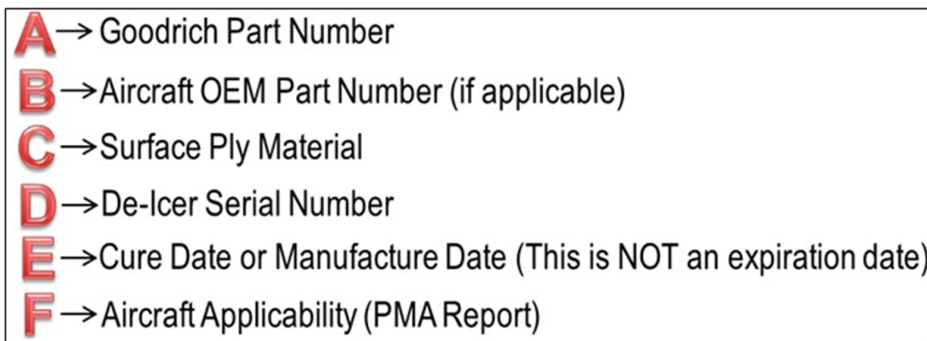
C. Information Required for Warranty Claim

- (1) Part Number
- (2) Serial Number
- (3) Cure (Manufacture) Date
- (4) Installation Date (or if on a new aircraft, date of aircraft Entry Into Service - EIS)
- (5) Removal Date
- (6) Flight hours since installation
- (7) Description of warrantable condition

**NOTE:** The laser brand (see Figure 1) is generally located on the lower wing surface on the inboard end of the de-icer. Some of the required information (see Figure 2) can be viewed on the laser brand.



**Figure 1. Laser Brand Example**



**Figure 2. Laser Brand Information**

**GOODRICH CORPORATION, A PART OF COLLINS AEROSPACE  
SERVICE NEWSLETTER**

D. Physical Evidence Required for Warranty Claim

(1) Photographs

Sometimes photographs are sufficient to evaluate a warranty claim. Photographs may be submitted with the information listed in Paragraph C, above, to the Product Support group at [dssd.support@collins.com](mailto:dssd.support@collins.com) for preliminary evaluation.

NOTE: Warranty claims must be made through the point of purchase. For direct customers, it is mandatory to obtain a Quality Notification (QN) prior to shipping physical evidence of a warranty claim for a pneumatic de-icer. A QN may be obtained by contacting [RMA.Request@collins.com](mailto:RMA.Request@collins.com).

(2) Physical Evidence

If photographs are not possible or do not provide sufficient information, the entire de-icer must be removed and returned. Refer to ATA 30-10-31 for warranty consideration de-icer removal procedure. The de-icer should be packaged in a material that will not stick to any remaining adhesive. This is particularly important for FASTboot® de-icers, as the pressure sensitive adhesive is very difficult to pull apart and may damage the de-icer, making evaluation impossible.

E. Definitions of Warrantable and Non-Warrantable Damage

These definitions may be helpful in describing the de-icer damage. Not all of these terms indicate a warrantable defect, as noted. Refer to Goodrich ATA 30-10-31 for allowable repair limits.

- (1) Delamination - internal plies of the de-icer have separated. If the delamination is of the surface ply only (see Figure 3), it is possible that it may be repaired if within the repair limits. If the delamination is of a ply other than the surface ply (see Figure 4), there is no repair. Delamination may indicate a warrantable defect or a non-warrantable wear-out failure depending on time and flight hours since installation.

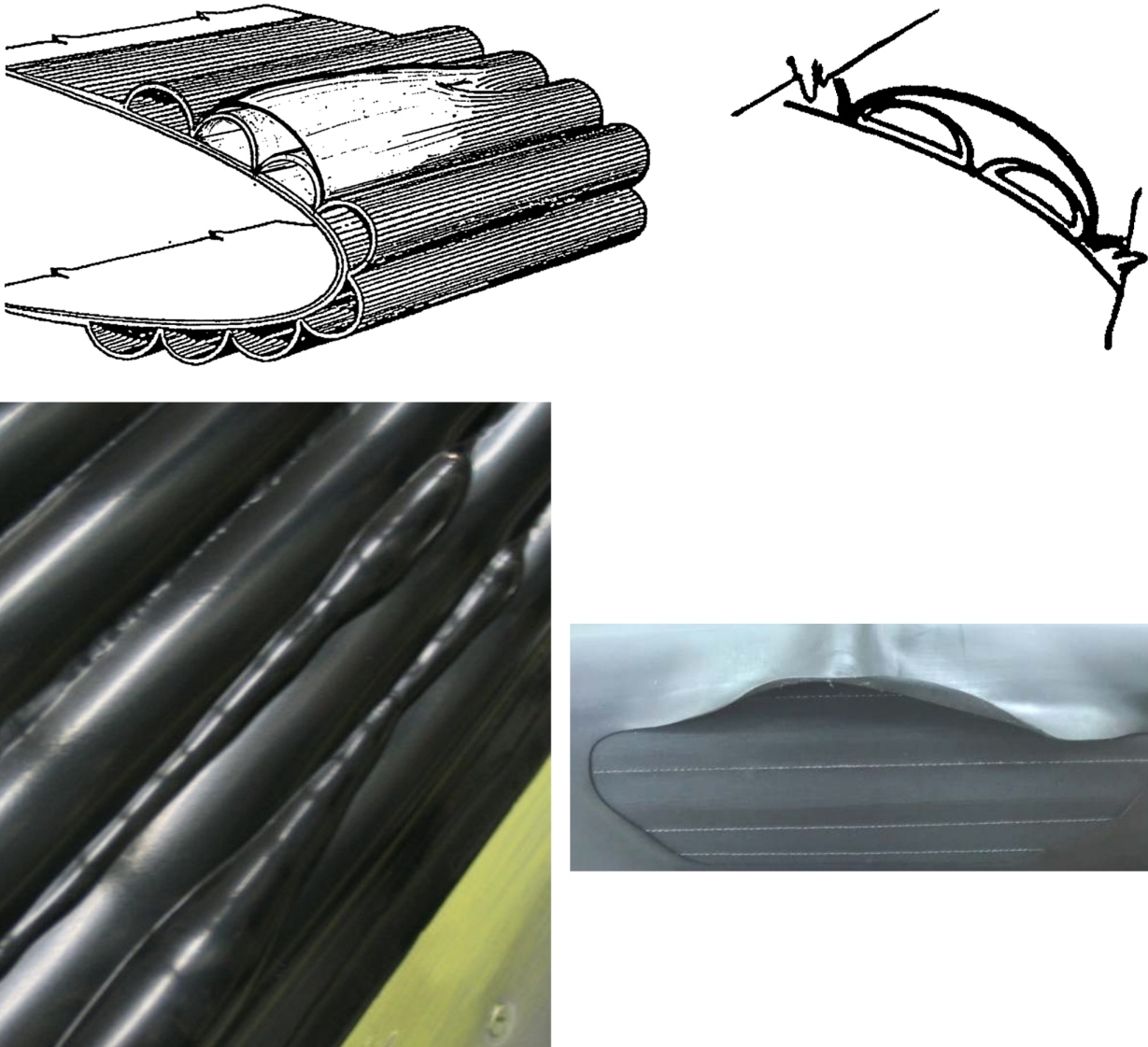
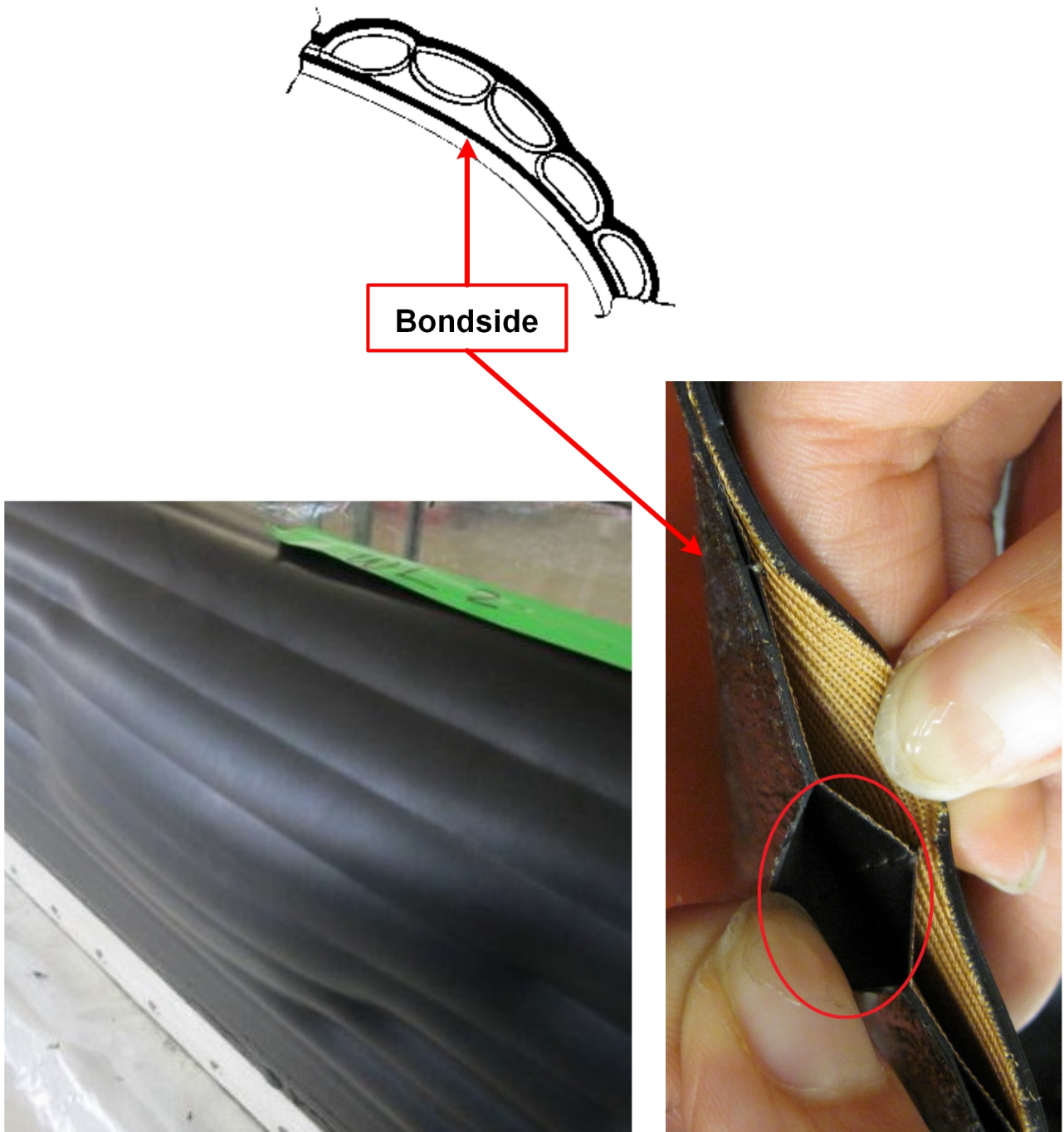


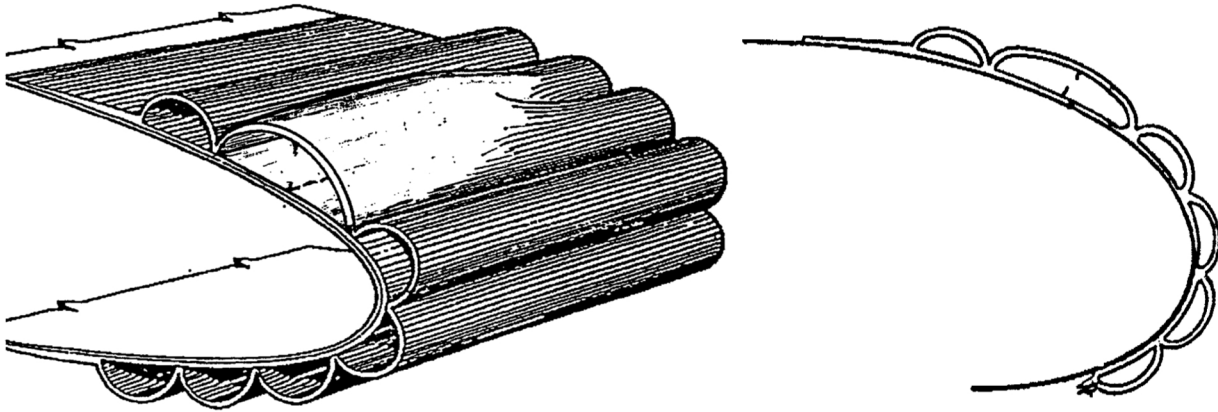
Figure 3. Surface Ply Delamination



■ **Figure 4. Bondside Delamination**

**GOODRICH CORPORATION, A PART OF COLLINS AEROSPACE  
SERVICE NEWSLETTER**

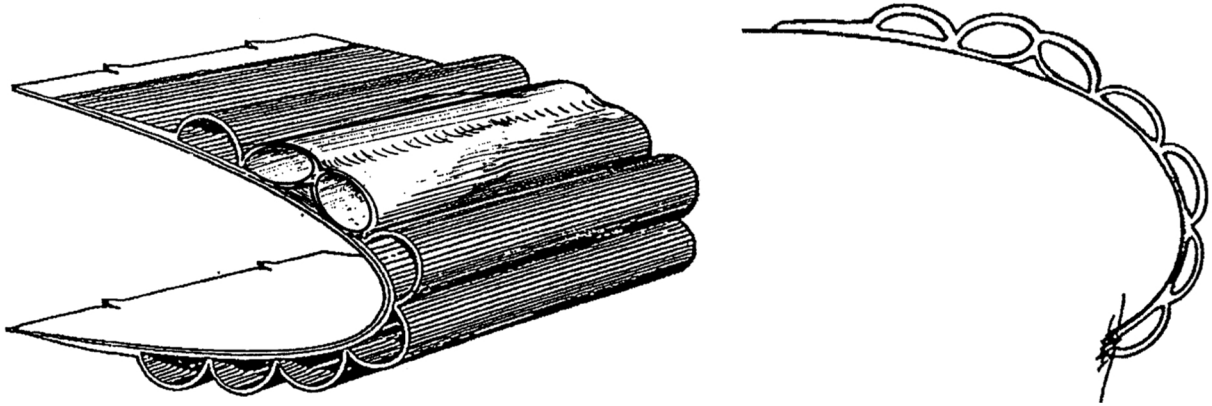
- (2) Broken stitch - stitching that separates the air tubes in the de-icer has broken, making two separate tubes appear as one in the area of the broken stitch. A broken stitch cannot be repaired. A broken stitch may indicate a warrantable defect or a non-warrantable environmental failure such as foreign object damage (FOD), static burn or lightning strike, or a wear-out failure, depending on time and flight hours since installation.



**Figure 5. Broken Stitch**

**GOODRICH CORPORATION, A PART OF COLLINS AEROSPACE  
SERVICE NEWSLETTER**

- (3) Debonding - bond (back) side of the de-icer has pulled away from the installation surface. Although an attempt can be made to rebond the de-icer, depending on the location of the debonded area, such a repair is risky and may be unacceptable in functionality and/or cosmetics. Generally speaking debonding does not indicate a warrantable defect; rather it indicates contamination during installation or improper installation.



**Figure 6. Debonding**

**GOODRICH CORPORATION, A PART OF COLLINS AEROSPACE  
SERVICE NEWSLETTER**

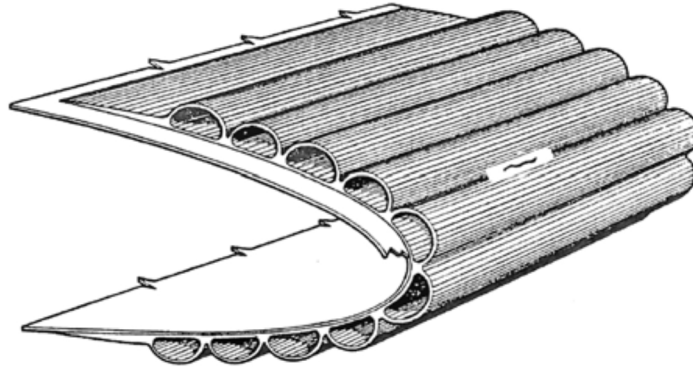
- (4) Erosion - wear and tear on the de-icer surface ply due to environmental conditions experienced in flight. Erosion is not a warrantable defect.



**Figure 7. Erosion Example**

**GOODRICH CORPORATION, A PART OF COLLINS AEROSPACE  
SERVICE NEWSLETTER**

- (5) Tear, rip, split - air leaking break in the de-icer surface that can be of varying depths. Generally speaking, these are not warrantable defects; rather they are due to FOD, cold-cracking, cold impact damage, excess waxes or coatings. Depending on size and depth, these can usually be patched.



**Figure 8. Split Example**

**GOODRICH CORPORATION, A PART OF COLLINS AEROSPACE  
SERVICE NEWSLETTER**

- (6) Pinholes - means any air leaking hole 1/16 inch (0.0625 in./1.6 mm) or smaller, often caused by static burns on the de-icer. Generally speaking, pinholes are not a warrantable defect; rather they are due to improper or worn conductive edge sealer, electrical storms, or by erosion through the de-icer surface ply. Pinholes can usually be repaired depending on the number.



**Figure 9. Pinhole caused by Static (left) or FOD (right)**

- (7) Lightning strike - may cause a significant hole burned through the de-icer. Damage to the de-icer from lightning strike is not a warrantable defect.
- (8) Cold-cracking - long slits or cracks in the de-icer that appear relatively straight and usually in the middle of the air tubes. Cold-cracking occasionally occurs when de-icers are cold-soaked to less than their designed operating parameters (-40°F/-40°C) and inflated while brittle. Cold-cracking is not a warrantable defect. Cold-cracking may be repaired depending on the extent of the damage.



**Figure 10. Cold-cracking Example**

**GOODRICH CORPORATION, A PART OF COLLINS AEROSPACE  
SERVICE NEWSLETTER**

- (9) Cold impact damage - small dents or cracks, often in a curved or half-moon shape. Cold impact damage occasionally occurs when de-icers are cold-soaked to less than their designed operating parameter (-40°F/-40°C) and encounter environmental foreign objects such as ice crystals or hail in flight. Cold impact damage is not a warrantable defect. Cold impact damage may be repaired depending on the extent of the damage.



■ **Figure 11. Cold Impact Damage Example**

- (10) Contamination - a foreign substance such as oil, fuel, grease, unauthorized coatings or repair materials, or improper application of authorized coatings or repair materials. Damage due to contamination is not a warrantable defect.



■ **Figure 12. Fuel Contamination Example**

**GOODRICH CORPORATION, A PART OF COLLINS AEROSPACE  
SERVICE NEWSLETTER**

F. Abbreviated Definition Sheet

These quick definitions may be helpful in describing the de-icer damage when the full document is not available. As referenced here, additional information may be available in Section E of this Service Newsletter.

Balloon:	Surface ply delamination	(Refer to Section 2.E.1)
Cold-cracking:	Long, defined slits	(Refer to Section 2.E.8)
Contamination:	Damage from foreign substance	(Refer to Section 2.E.10)
Crazing:	Shallow surface cracking	
Debond:	Lifting of de-icer from leading edge	(Refer to Section 2.E.3)
Delamination:	Internal ply separation	(Refer to Section 2.E.1)
Erosion:	Surface wear	(Refer to Section 2.E.4)
Ice Impact Damage:	Curved dents/cracks	(Refer to Section 2.E.9)
Pinhole:	1/16 in. (0.0625 in./1.6 mm) (or smaller) hole	(Refer to Section 2.E.6)
Quilting:	Surface swelling	(Refer to Section 2.E.10)
Rip/Slit/Split/Tear:	Air-leaking break	(Refer to Section 2.E.5)
Rupture:	Burst open with exposed layers	