

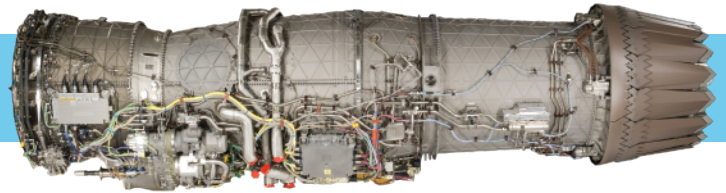


GO BEYOND

PRATT & WHITNEY F135 ENGINE FAST FACTS | 2023

F135

The World's Most Advanced Fighter Engine



CAPABILITY



40K+ LBS
of thrust



5th GENERATION
stealth
technologies



**PRECISE
& RESPONSIVE**
integrated engine
control system



50% INCREASE
in thermal management
capacity over 4th
generation engines

AVAILABILITY



1,000+
engines delivered
in total

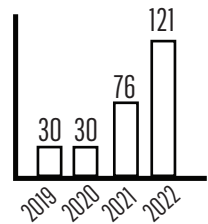


Current production
configuration is
DOUBLE the spec
for mean flight hours
between removals

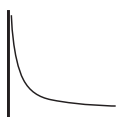


Three regional MRO&U
facilities recently achieved
**INITIAL DEPOT
CAPABILITY** (Australia,
Netherlands, Norway)

Global network achieved
4X depot output since 2022



AFFORDABILITY



Reduced average cost
of an F135 by **MORE
THAN 50%** to date

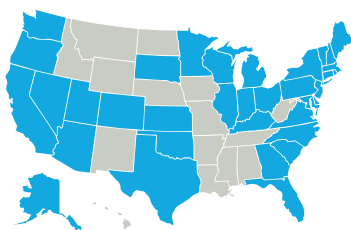


Component Improvement
Program investments are
projected to yield **~\$16
BILLION** in lifecycle cost
savings



**TARGETING ~50%
COST REDUCTION**
on 1st scheduled
maintenance visit, which is projected
to **SAVE \$14+ BILLION** over the
life of the program

ECONOMIC IMPACT & INVESTMENT



● SUPPLIER LOCATIONS

The F135 program
supports **55,000+**
JOBS in the U.S.

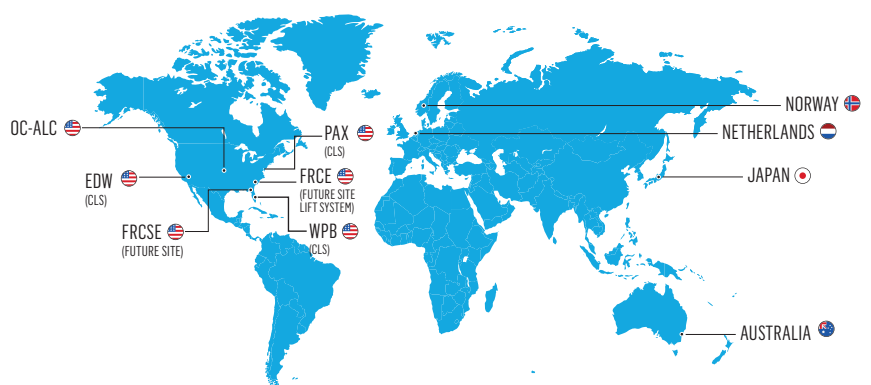
More than **260
SUPPLIERS** provide
parts for the F135

Contributes **\$1.7B+** to
the U.S. economy



\$500+ MILLION invested in
capital, process improvements &
cost reduction initiatives

F135 GLOBAL MRO&U NETWORK



MAINTENANCE, REPAIR, OVERHAUL & UPGRADE (MRO&U)
CONTRACTOR LOGISTICS SUPPORT (CLS)

This document has been publicly released and is not subject to the EAR or ITAR.





GO BEYOND

PRATT & WHITNEY F135 ENGINE FAST FACTS | 2023

F135

The World's Most Advanced Fighter Engine



F135-PW-100
Conventional Takeoff and Landing (CTOL)

F135-PW-600
Short Takeoff/Vertical Landing (STOVL)

F135-PW-100
Carrier Variant (CV)

PROGRAM AT A GLANCE (AS OF JULY 1)



975+
aircraft in service



734,000+
flight hours



39
bases worldwide
(includes ship activations)



12
services have
declared IOC

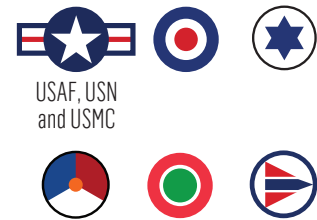
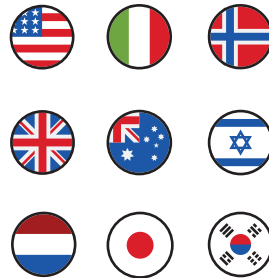
F-35/F135 IN ACTION

14
services flying

438,000+
sorties

9
nations operating on home soil

8
services have conducted
operational missions



F-35 PROGRAM PARTICIPANTS



FOREIGN MILITARY SALES

F135 ENGINE SPECS

F135 ENGINE SPECS	F135-PW-100 Conventional Takeoff and Landing (CTOL) Carrier Variant (CV)	F135-PW-600 Short Takeoff/Vertical Landing (STOVL)
Maximum Thrust Class	43,000 lbs	41,000 lbs
Intermediate Thrust Class	28,000 lbs	27,000 lbs
Short Takeoff Thrust Class	—	40,740 lbs
Hover Thrust Class	—	40,650 lbs
Length	220 in	369 in
Inlet Diameter	43 in	Main engine: 43 in Lift fan: 51 in
Maximum Diameter	46 in	Main engine: 46 in Lift fan: 53 in

Updated: August 2, 2023
This document has been publicly released and is not subject to the EAR or ITAR.

