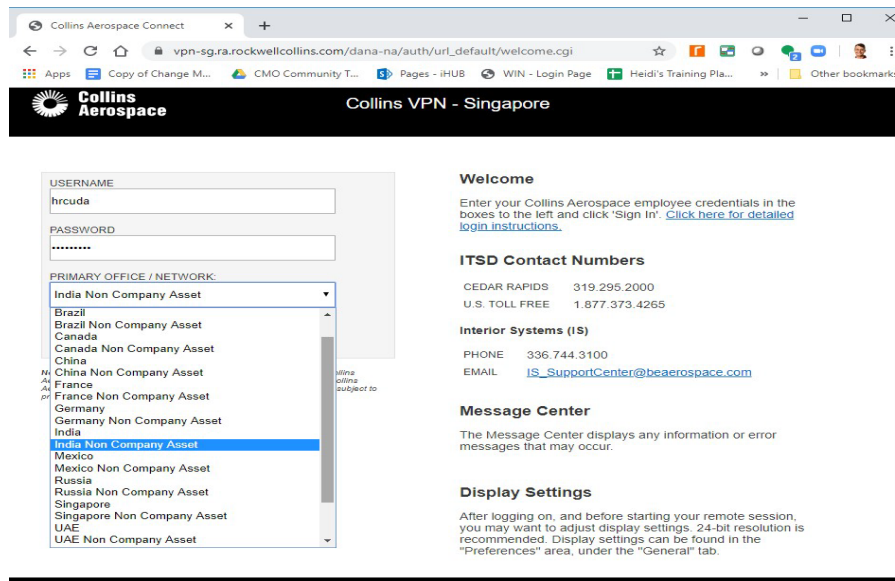


Pulse Secure Remote Access for Personal Devices

This website is used to access resources with a computer system that is not a company-owned asset, such as your home computer.

1. Open a web browser.
2. Visit the appropriate VPN site based on your location and computer operating system.
 - a. If you are on a Windows-based computer, use the link below that is closest to your location:
 - i. **United States:** <https://vpn-us.ra.rockwellcollins.com>
 - ii. **London:** <https://vpn-ld5.ra.rockwellcollins.com>
 - iii. **Frankfurt:** <https://vpn-fr7.ra.rockwellcollins.com>
 - iv. **Singapore:** <https://vpn-sg3.ra.rockwellcollins.com>
 - b. If you are on a Mac, use this link
 - i. <https://vpn-ch3.ra.rockwellcollins.com> (supports US, Mexico, India, & France)
3. Log in to Pulse Remote Access.
 - a. Enter your username and password.
 - b. Choose your primary office (Non-Company Asset selection) from the dropdown.



Collins Aerospace Connect

Collins Aerospace

Collins VPN - Singapore

USERNAME
hrcuda

PASSWORD

PRIMARY OFFICE / NETWORK:
India Non Company Asset

Brazil
Brazil Non Company Asset
Canada
Canada Non Company Asset
China
China Non Company Asset
France
France Non Company Asset
Germany
Germany Non Company Asset
India
India Non Company Asset
Mexico
Mexico Non Company Asset
Russia
Russia Non Company Asset
Singapore
Singapore Non Company Asset
UAE
UAE Non Company Asset

WELCOME

Enter your Collins Aerospace employee credentials in the boxes to the left and click "Sign In". [click here for detailed login instructions.](#)

ITSD Contact Numbers

CEDAR RAPIDS 319.295.2000
U.S. TOLL FREE 1.877.373.4265

Interior Systems (IS)

PHONE 336.744.3100
EMAIL IS_SupportCenter@beaerospace.com

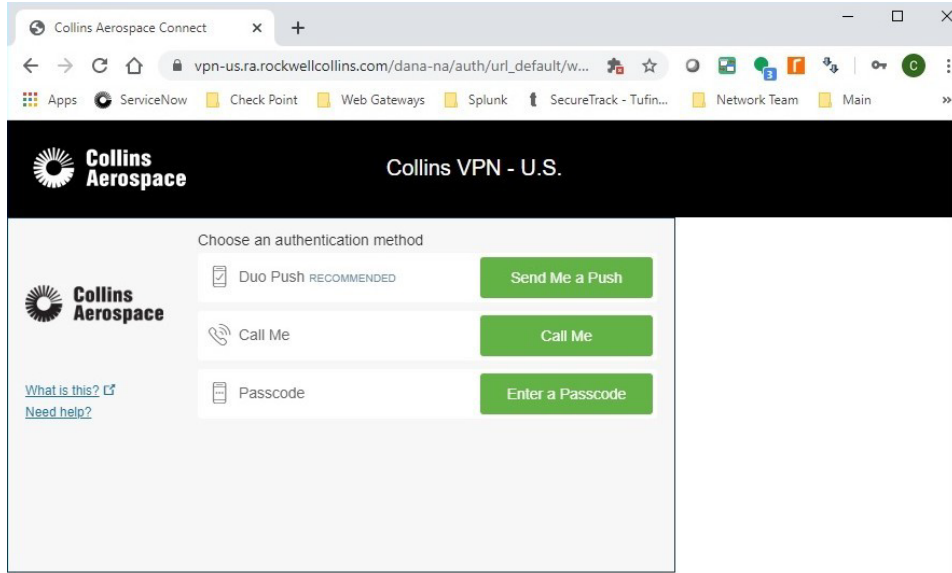
Message Center

The Message Center displays any information or error messages that may occur.

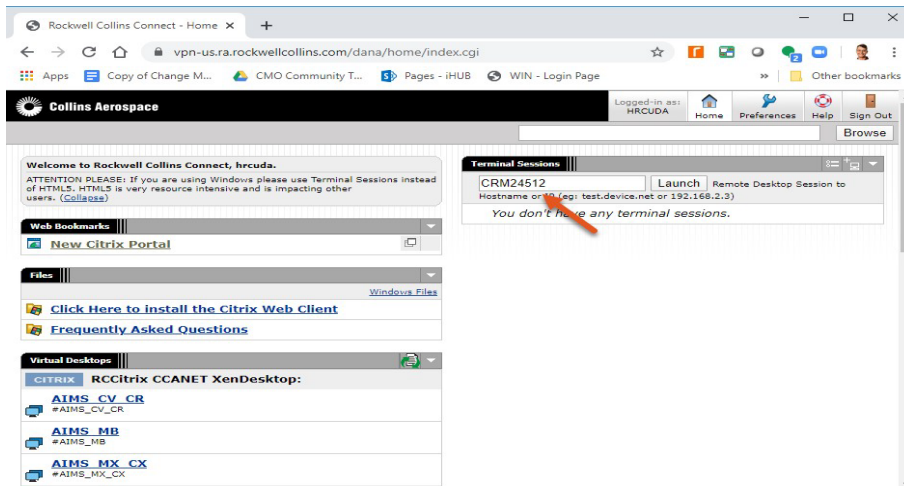
Display Settings

After logging on, and before starting your remote session, you may want to adjust display settings. 24-bit resolution is recommended. Display settings can be found in the "Preferences" area, under the "General" tab.

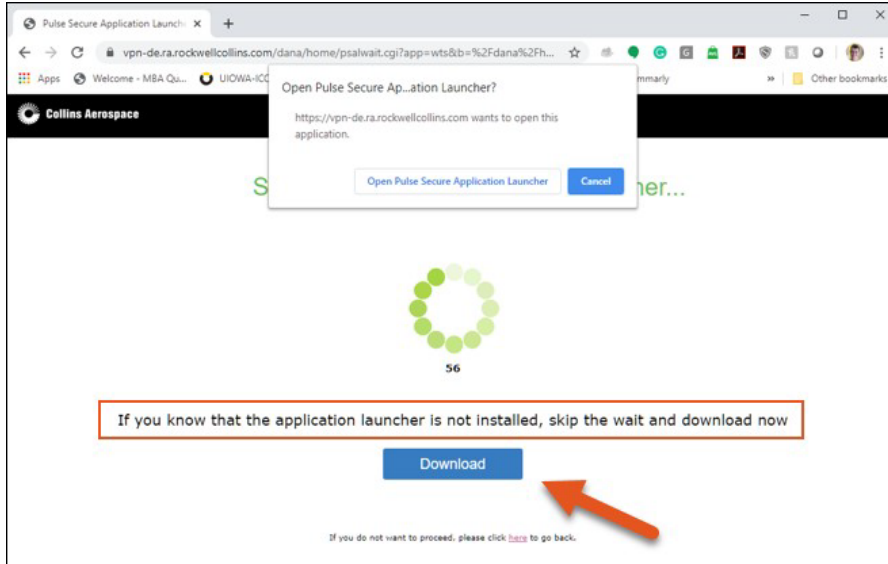
- c. Click **Sign In**.
- d. Follow the DUO prompts.



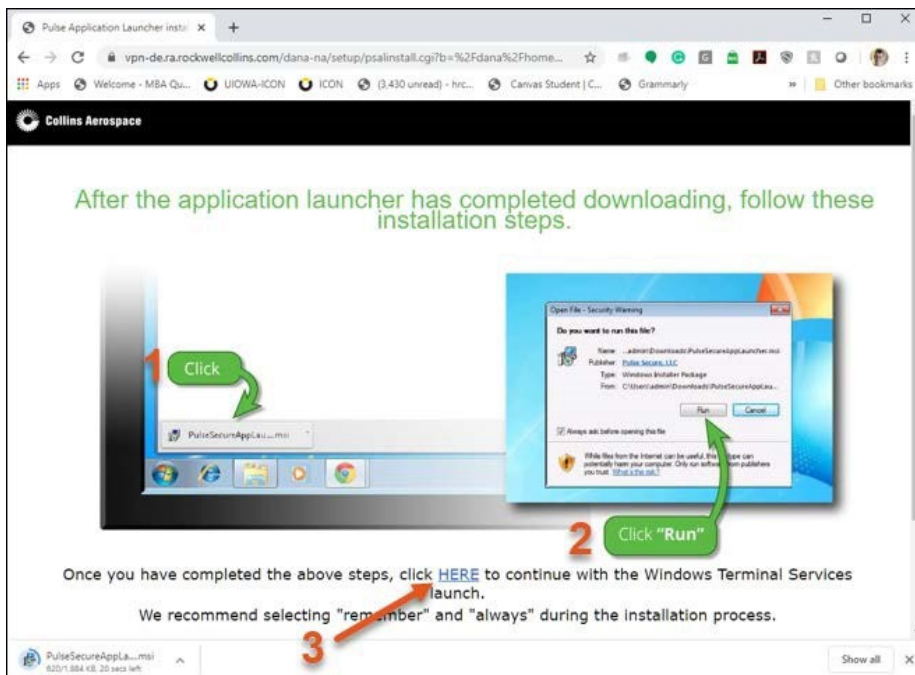
4. Enter your PC number in the Terminal Sessions box and click **Launch**.



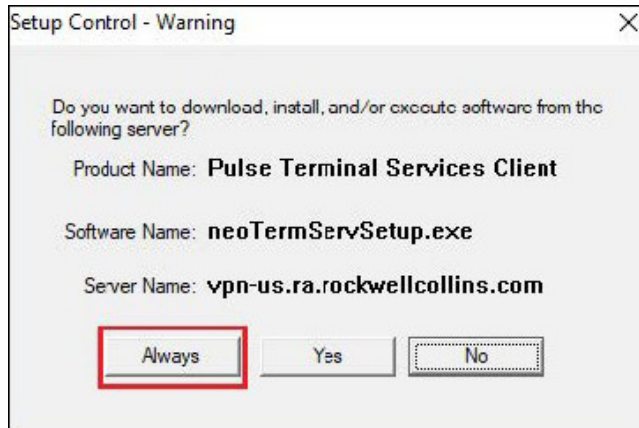
5. If you are a first-time user, you will be prompted to download the Pulse Secure Application Launcher. Click **Download**.



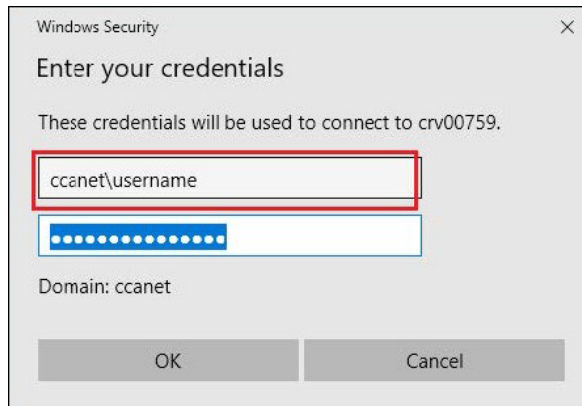
6. After the launcher finishes downloading, follow the on-screen instructions.



7. Click **Always** in the message box.



8. Provide your login credentials. In the Username field, you must prefix your username with your domain name and a backslash. See the example below for CCANET. Substitute your domain as appropriate.



9. Click **OK** to connect.