



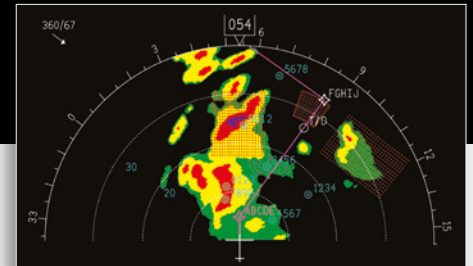
WXR-2100A MULTISCAN THREATTRACK™ WEATHER RADAR

SUPERIOR DETECTION, ADVANCED ANALYSIS

Fully automatic operation detects, prioritizes weather threats to 320 nautical miles

The Collins Aerospace MultiScan ThreatTrack™ weather radar offers an innovative approach to detecting and analyzing weather phenomena and displaying adverse weather threats, enabling safer, smoother and more efficient flights. Global flight tests of the system have validated the performance of the threat detection concept and ensure that the radar makes optimum adjustments to maximize the "probability of detecting" thunderstorms during all phases of flight.

Crews will benefit from additional innovative technologies that go beyond today's most advanced radar systems by adding predictive weather analysis and new threat detection features.



KEY FEATURES

- Patented track-while-scan technology prioritizes weather threats out to 320 NM by performing dedicated horizontal and vertical scans on developed or fast-growing convective cells that pose an actual threat
- Geographic weather correlation uses a database of geographic and seasonal weather variations that enhance MultiScan ThreatTrack's algorithms to provide accurate worldwide hazard information suppression
- Variable, temperature-based gain



KEY FEATURES (CONT.)

- Predictive wind shear detection with wind shear event data recording and retrieval
- Core threat assessment examines thunderstorm cells and increases the displayed colors to better represent the actual thunderstorm threat
- Associated threat assessment infers lightning, hail and convective threat potential within and external to a thunderstorm core
- Predictive OverFlight™ protection tracks thunderstorm cells ahead and below the aircraft, measures growth rate, predicts bow-wave turbulence and indicates potential threats in the aircraft's flight path
- Two-level enhanced turbulence detection detects severe and ride-quality turbulence up to 40 NM ahead of the aircraft
- Advanced ground clutter suppression eliminates ground clutter on the weather display at all ranges, allowing pilots to concentrate exclusively on true weather threats

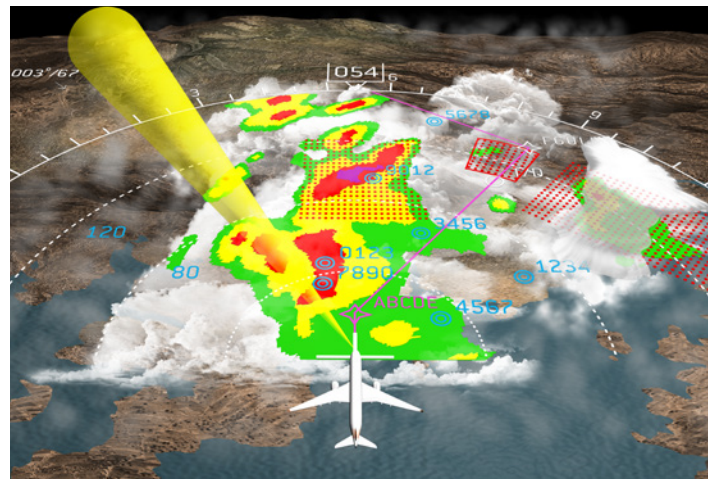
ADDITIONAL FEATURES

- Fully automatic operation
- Enhanced geographic and seasonal weather correlation for maximum worldwide performance
- Optimized weather detection from 0 to 320 NM and all altitudes
- OverFlight protection (prevents inadvertent thunderstorm top penetration)
- SmartScan™ real-time weather during turns
- TrueZero™ antenna compensation
- Redesigned RF section for improved performance and enhanced reliability
- Demonstrated, industry-leading antenna drive reliability
- Simultaneous display updates in all range/mode combinations
- Split function control
- Optional manual mode can be used by crews at any time



AVAILABLE MODES

- MultiScan ThreatTrack automatic operation
- Ground map
- Weather
- Weather plus turbulence
- Wind shear detection (takeoff and landing flight phases)
- Turbulence detection
- Manual operations – independent; mode, gain, tilt, range for each pilot
- Manual gain available in all modes



Specifications subject to change without notice.



Collins Aerospace

+1.319.295.4085

avionicsmarketing@collins.com

collinsaerospace.com