



EGSE/SIL PROGRAM SUPPORT SOLUTIONS

YOUR COCKPIT ON THE GROUND

For smooth implementation and integration of avionics upgrades, System Integration Labs (SILs) are your cockpit on the ground. They're critical for testing, troubleshooting, software design and training before the installation of new or updated avionics equipment. Electronic Ground Support Equipment (EGSE) is vital for the mock-up and testing of rocket launch equipment.

Our vast experience and knowledgeable team of application and manufacturing engineers combine superior customer service with quality, ready-to-use SIL and EGSE solutions designed to meet your avionics upgrade needs. We have the flexibility to scale production to fit your program requirements, from individual harnesses to complete rack builds, including all fabricated components from single rack assembly to full rack integrations.

Whatever your requirements, our team will work closely with you to deliver a custom testing solution that helps increase production rates and reduce manufacturing costs on your EGSE/SIL programs. We also have experience with refurbishment programs for SIL and EGSE test equipment. From updating the rack to full rewire projects and ground-up builds, we offer numerous opportunities for significant cost savings.

KEY FEATURES AND BENEFITS

- Mechanical fabrication and wire laser marking capabilities
- Application/manufacturing/design engineering support
- Signal switches that simulate malfunctions
- Technical support teams to assist with on-site changes
- Interconnect module for interchangeability
- Console layout and build
- Weekly program action video conferences
- Inventory and supply chain support/materials coordination





COMPONENTS AND CAPABILITIES

Cabling

- Coaxial
- Ethernet
- Data bus
- Fiber optic
- Ribbon
- Twist and flat

Harnessing

- Custom
- Umbilical
- Build to print
- Application engineered
- Custom sealing/bonding
- Harting connectors/power connectors

Fabricating structural components

- Custom metal fabrication
- Mechanical boxes
- Mounts, brackets
- Customized racks
- Panels, shelves and plates

Electrical/mechanical integration

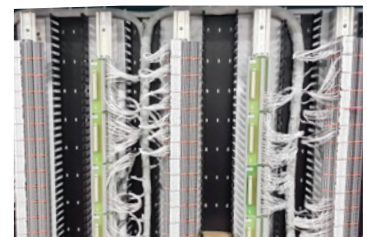
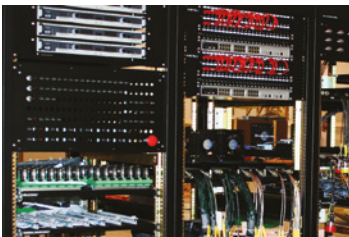
- Circuit breaker panels
- Breakout boxes
- Multi-source power supplies
- VME hardware
- Relay/equipment shelves
- Signal separation
- Switch panels
- Connector panels

Testing

- Power up
- Cirris
- Simulation
- Full-cabinet functionality
- Reconfigured circuit cards

Quality

- AS9100/D Certified
- Risk management
 - Complete team ownership
- Configuration management
- International Traffic in Arms Regulations (ITAR) registered/Defense Priorities and Allocation System (DPAS) processes
- Rail/master schedule controls
- Labor/material tracking systems



Specifications subject to change without notice.



Collins Aerospace

Collins Aerospace

+1.262.679.6170

fax: +1.262.679.6175

LIS_Sales@beaerospace.com

collinsaerospace.com