

C12031-101/-201/-3

Ground power service bus

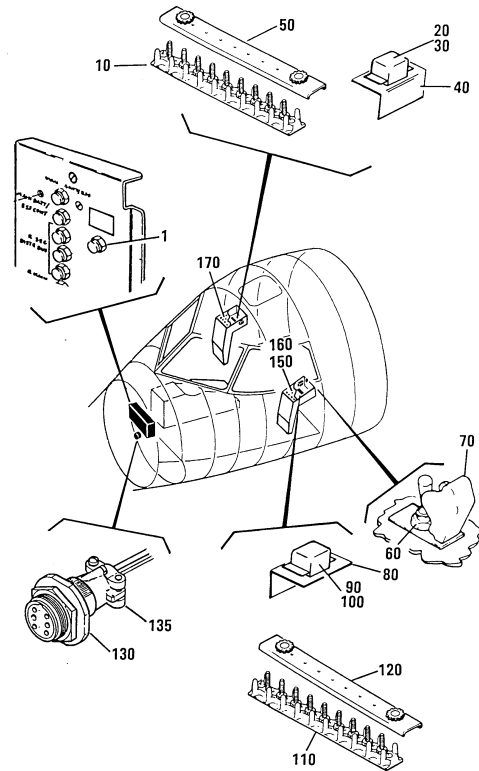
Power without energizing the whole aircraft – The ground power service bus modification will allow the operator to use the cabin overhead lighting, airstair door light, and position lights during ground operations without energizing the complete aircraft electrical system.

The ground power service bus is controlled by the GND SERV POWER switch, located on the LH DC circuit breaker panel. The bus is energized by momentary selection of the GND SERV POWER switch ON position. The switch is spring loaded to the center position.

The ground power service bus may be manually turned OFF by momentary selection of the GND SERV POWER switch to OFF position. The ground power service bus will automatically be turned OFF by any the following conditions:

- > Disconnection or deactivation of the DC Ground Power Unit
- > Manual selection of External Power to ON
- > Over-voltage condition of the DC Ground Power Unit

When the ground power service bus is OFF, the loads listed above (interior lights and position lights) will revert to their normal power source. Because the ground power service bus is enabled only when a DC ground power unit is connected, and is automatically disabled when external power is selected to ON, no flight crew control or monitoring of the bus is required.



SPECIFICATIONS

Applicability	Manpower	Kit contents	Weight	Certification	Delivery
DHC-8-100/-200/-300	Approximately 50 man-hours	<ul style="list-style-type: none"> > Guarded control switch > Harness assembly with pre-wired relay socket and terminal block (2) > Relay (2) > 35A, 30A, 20A (2) circuit breakers > Receptacle and plug > Pre-marked wiring > Terminals, splices etc. 	Increase of 4.8 lbs.	<ul style="list-style-type: none"> > Transport Canada: SA99-216 > FAA: ST00998NY > German LBA: TA0292 > Spain¹: Letter of Acceptance > Netherlands²: SA 0010 NL > Austria²: ACG.21NE.008 > Aruba: DL-1500185 	F.O.B. Winnipeg, Canada

¹DHC-8-300 only
²DHC-8-100/-300 only

FEATURES & BENEFITS

- > Selected cabin systems are powered without energizing the entire aircraft
- > Increase in avionics and electrical component life
- > Enhanced safety for ground maintenance activities
- > Removal of maintenance panels and flight deck trim panels for access
- > No removal of flight deck or cabin equipment required

KIT OPTIONS

- > C12031-101 – Installation kit (-100)
- > C12031-201 – Installation kit (-200)
- > C12031-3 – Installation kit (-300)

Building trust every day.

Rockwell Collins delivers innovative aviation and high-integrity solutions that transform commercial and government customers' futures worldwide. Backed by a global network of service and support, we are deeply committed to putting our solutions to work for you, whenever and wherever you need us. In this way, working together, we build trust. Every day.

For more information, contact:

Rockwell Collins
Lighting & Engineered Solutions
25 Dunlop Avenue,
Winnipeg, MB Canada R2X 2V2
ph: +1.204.783.5402
fax: +1.204.772.7568
rockwellcollins.com