



Take your Legacy 450/500 capably into NextGen® flight.

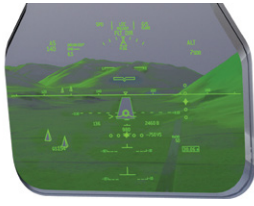
Take advantage of even greater efficiencies and operational effectiveness with a wide array of technology options for our Pro Line Fusion® integrated avionics system. Move your aircraft into NextGen® airspace while safeguarding flight crews, passengers and your aircraft with the latest threat detection, situational awareness, communication capability and more.

Legacy operators already have cutting-edge technology, including our standard Pro Line Fusion avionics system. These avionics options enable significantly enhanced access, range, flight time, fuel savings and safety. Because when it comes to your Legacy, best equipped is best served.

STANDARD FLIGHT DECK FEATURES

- > Four 15-inch liquid crystal displays with advanced graphics
- > Synthetic Vision System
- > Configurable split-screen formats
- > Dual VHF communications
- > Dual Global Navigation Satellite System (GNSS)
 - > Dual advanced flight management systems
 - WAAS LPV capability and RNP capabilities
- > Integrated Flight Information System (IFIS)
 - Electronic charts
 - Enhanced map overlays
 - Document reader
- > Integrated traffic surveillance system (TCAS II)
- > Terrain Awareness Warning System (TAWS)
- > Information Management System (IMS) Wi-Fi® and cellular
- > On-board maintenance system
- > Graphical flight planning
- > Full-flight regime autothrottle
- > Graphical aircraft system synoptics
- > Electronic checklists
- > High-resolution terrain maps with overlays
- > Vertical Situation Display (VSD)
- > MultiScan™ weather radar

Avionics options that enhance aircraft capability and value.



Head-up Guidance System (HGS™)

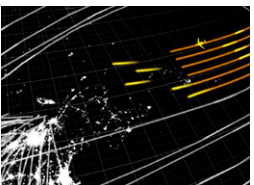
Mitigate unstable approaches by having critical flight information in pilots' forward field of view for greater flight path awareness and safety, while also taking advantage of lower landing minima available only with head-up displays.



Enhanced Vision System (EVS)

See through low-visibility conditions for real-time awareness of the terrain and obstacles in your aircraft's

flight path. A solution that brings the industry-first ability to detect LED airport lighting.



FANS 1/A capability

Burn less fuel and expedite your departure clearance at designated airports. Equipping with FANS 1/A in the United States reduces radio communication with air traffic control – clearances go directly to your aircraft via data link for easy upload.

Predictive wind shear

Know when wind shear is ahead; an enhanced feature of MultiScan weather radar provides pilots with visual and aural cautions before wind shear becomes an immediate threat to their aircraft.

Automatic Dependent Surveillance-Broadcast (ADS-B) Out

Maintain your aircraft's value while complying with upcoming ADS-B Out mandates with an option that delivers real-time traffic and aeronautical information to your flight deck.

Controller-Pilot Data-Link Communications (CPDLC)

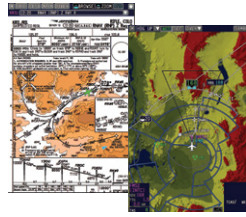


Reduce pilot workload with a direct data-link communication channel between pilots and air traffic controllers – Link 2000+ is recommended for flights within EUROCONTROL jurisdiction.



Surface management/runway incursion

Two innovative tools maximize pilot situational awareness when approaching, departing or taxiing at complex or unfamiliar airports: Our high-resolution Airport Moving Map and aural and visual takeoff and landing alerts. Both reduce the risk of runway incursion and confusion.

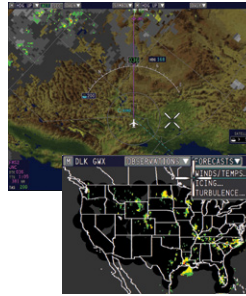


Paperless operation

Simplify cockpit operations and reduce cockpit distractions with an integrated solution for approach plates, en-route charts, documents or manuals, requiring no separate device on board.

High frequency (HF)/SELCAL

Gives pilots long-range communication capability in oceanic or remote regions.



XM™ or Data-link graphical weather

XM provides high-resolution, strategic weather data, with updated awareness of changing weather patterns in the continental United States.

Data-link graphical weather offers a worldwide, strategic weather data view. Both are capable of overlaying the navigational map for seamless decision making.

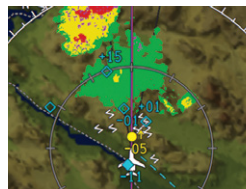


RNP AR 0.3

Equip your aircraft with Performance Based Navigation (PBN) for precise, efficient routing, easier access to heavily congested or terrain-challenged airports, lower landing minima, shorter flights and fuel savings.

Second autothrottle

Enable your aircraft with increased redundancy for dispatch.



Lightning detection

Color-coded lightning symbols display a map of activity around your aircraft out to approximately 100 nautical miles, assisting pilots in determining the best routing to avoid convective weather.

For more information, contact:

Rockwell Collins
400 Collins Road NE
Cedar Rapids, Iowa 52498
+1.319.295.4085
csmarketing@rockwellcollins.com
rockwellcollins.com