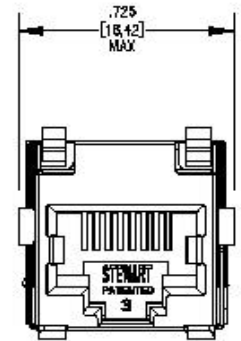
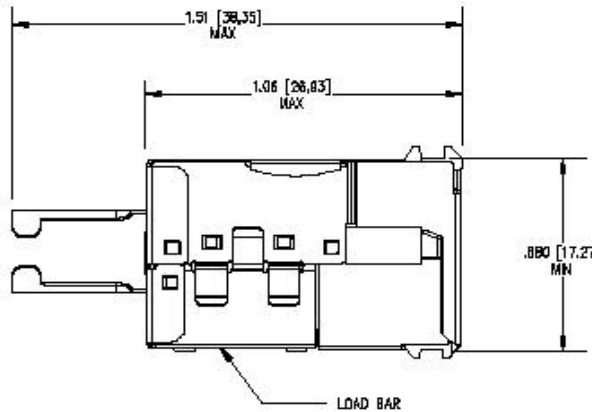
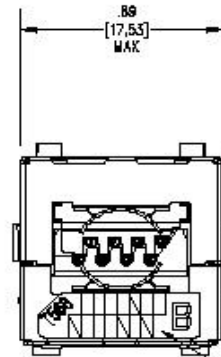
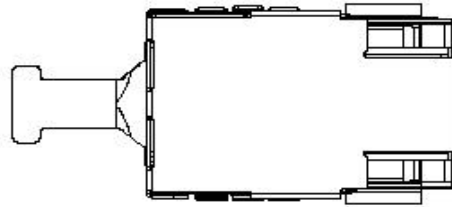
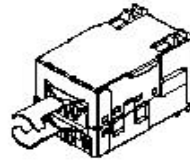


THIS DOCUMENT AND THE INFORMATION IT CONTAINS IS THE PROPERTY OF EMTEQ INC. AND MAY NOT BE USED IN ANY WAY WITHOUT THE EXPRESS WRITTEN CONSENT OF EMTEQ INC.

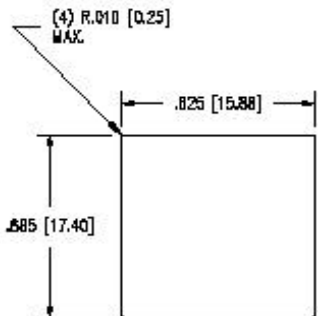
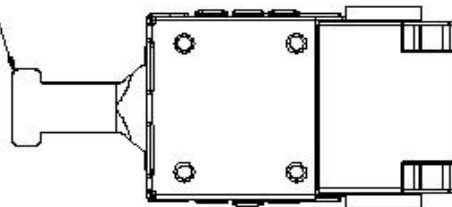
REV	REVISION	DATE	ER #	INTL
A	UPDATED NOTES	06/03/2006	5412	LRL

NOTES:


- 1.) TERMINATE CONNECTOR USING EMTEQ CRIMPING INSTRUCTION, ES-106-2.
- 2.) CONNECTOR MATERIALS:
HOUSING:
THERMOPLASTIC UL94-V-0
CONTACTS/SHIELD:
COPPER ALLOY
CONTACT PLATING:
SELECTIVE GOLD IN CONTACT AREA
- 3.) JACK SPECIFICATION:
FOR CATEGORY 5E APPLICATIONS.
AS TESTED PER TIA/EIA-586-A FOR CONNECTION HARDWARE.
AS TESTED PER TIA/EIA-TSB67 FOR TWISTED-PAIR CABLING SYSTEM.
- 4.) TOLERANCES COMPLY WITH F.C.C. DIMENSION REQUIREMENTS.
- 5.) BEZELS AVAILABLE - DATA, VOICE
- 6.) WIRE RANGE 26 TO 24 AWG [0.41 - 0.51 mm].
- 7.) WIRE INSULATION DIA RANGE 0.036 - 0.042 [0.91 - 1.07 mm].
- 8.) MINIMUM 750 MATING CYCLES DURABILITY.
- 9.) SUITABLE FOR GIGA-BIT ETHERNET APPLICATIONS.



WIRE STRAIN RELIEF



RECOMMENDED PANEL OPENING
.074 [1.88] MAXIMUM PANEL THICKNESS

MATERIAL	SCALE	SIZE	DATE	 5349 S. EMMER DRIVE NEW BERLIN, WI 53151 (888) 679-6170	SHIELDED CABLE READY CAT5e JACK (SHOWN IN TERMINATED CONDITION)
		A	9/3/2004		
FINISH	TOLERANCES UNLESS NOTED		DRAWN	CAGE CODE 06WH3	DWG # RJ45-0824FJ
	.XX = ± .03 .XXX = ± .010 ANGLES ± 1°		C. HOBSON		
		CHECKED 06/05/2006 C. HOBSON	DESIGNED APPROVED 06/05/2006	SHT 1 OF 1	

NOTICE -- ALL CHANGES TO THIS DOCUMENT ARE CONTROLLED BY EMTEQ INC. / UNLESS OTHERWISE STATED, ALL REPRODUCTIONS OF THIS DOCUMENT ARE NOT CONTROLLED BY EMTEQ INC.

FILE: RJ45-0824FJ.pr1