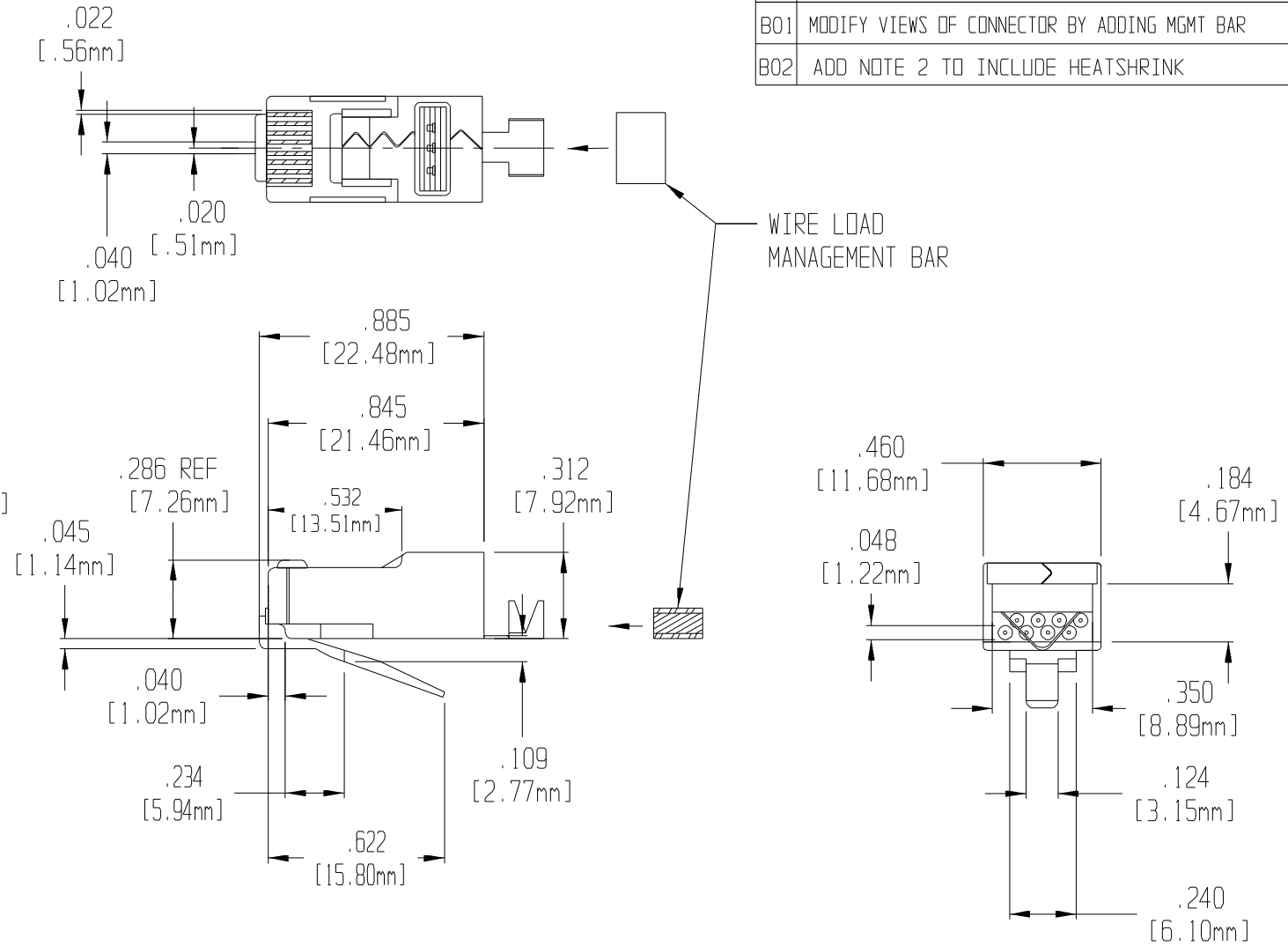
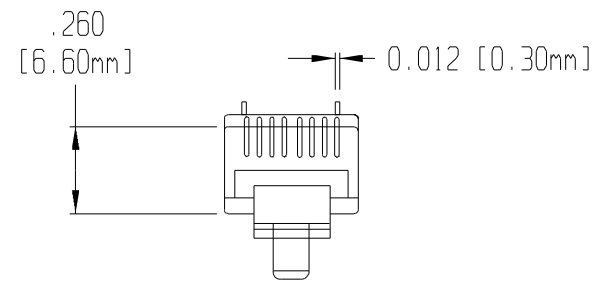


THIS DOCUMENT AND THE INFORMATION IT CONTAINS IS THE PROPERTY OF EMTEQ INC. AND MAY NOT BE USED IN ANY WAY WITHOUT THE EXPRESS WRITTEN CONSENT OF EMTEQ INC.

REV	REVISION	DATE	ER #	INTL
B	CHANGE TERMINATION INSTRUCTION TO ES-106-4	05/09/2008	8408	VML
B01	MODIFY VIEWS OF CONNECTOR BY ADDING MGMT BAR	03/22/2010	10674	VML
B02	ADD NOTE 2 TO INCLUDE HEATSHRINK	03/03/2011	11648	VML

NOTES:

- 1.) TERMINATE USING EMTEQ CABLE TERMINATION INSTRUCTION, ES-106-4
- 2.) HEAT SHRINK INCLUDED (1/2" ATUM)



SPECIFICATIONS:

PERFORMANCE: MEETS OR EXCEEDS 5 EIA/TIA 2840, ANNEX 8 SPECIFICATION
 CONTACT MATERIAL: PHOSPHOR BRONZE - .012 THK
 CONTACT PLATING: 50 MICRO-INCH; OTHER PLATING OPTIONS AVAILABLE
 SELECTIVE 24 CARAT HARD GOLD PLATE IN CONTACT AREA
 OVER 100 MICRO-INCH MINIMUM NICKEL PLATE
 PER CURRENT SELECTIVE GOLD PLATING REQUIREMENTS

PLUG MATERIAL: POLYCARBONATE
 PLUG TOLERANCES AND DIMENSIONS: COMPLIES WITH F.C.C REQUIREMENTS
 FLAME AUTO EXTINGUISH LEVEL: 94-V0 - FILE# E18811
 OPERATION TEMPERATURE: -40°C TO +70°C
 INSERTION/EXTRACTION LIFE: 1000 CYCLES
 CONTACT RESISTANCE: 10 MILLIOHMS MAX.

CURRENT/VOLTAGE: 30 VAC/42 VDC AT 1.5 AMPS

PERFORMANCE: RECOMMENDED USE ON SYSTEMS SUCH AS 10 BASE T, 100 BASE TX & ANY APPLICATION USING DATA LINES 1 & 2, 3 & 6.
 CONNECTOR INCLUDES EXTERNAL STRAIN RELIEF

MATERIAL	SCALE	SIZE B	DATE 12/20/2006	EMTEQ 5349 SOUTH EMMER DRIVE NEW BERLIN, WI 53151 (888) 679-6170
	TOLERANCES UNLESS NOTED .XX = ± .03 .XXX = ± .010 ANGLES ± 1°		DRAWN V. LEX DESIGNED	
FINISH	CAD GENERATED AND MAINTAINED DRAWING -- DO NOT SCALE		CHECKED <i>[Signature]</i> 03/04/2011	8 CONDUCTOR MODULAR PLUG
	APPROVED G. PALMETER 03/04/2011		CAGE CODE DWG # 06WH3 RJ45-0824-LG00	
NOTICE -- ALL CHANGES TO THIS DOCUMENT ARE CONTROLLED BY EMTEQ INC. / UNLESS OTHERWISE STATED, ALL REPRODUCTIONS OF THIS DOCUMENT ARE NOT CONTROLLED BY EMTEQ INC.				SHT 1 OF 1 FILE: RJ45-0824-LG00.prt