



*Upgrades that take your Pro Line 21
Premier 1/1A into NextGen® airspace.*

Pro Line 21™

INTEGRATED AVIONICS SYSTEM
FOR PREMIER 1/1A®

**Rockwell
Collins**

Building trust every day

Premier 1/1A Pro Line 21 upgrades

Baseline package includes the latest AFD software version 10.4 and FMS software version 4.2 to support worldwide LPV/RNP and establish a baseline for the latest options like integrated ADS-B, IFIS 6 and SVS.

Special package pricing available when ADS-B, SVS and IFIS upgrades are combined.

Package price will vary depending on current configuration of the aircraft.

	Upgrade package	Option	
(AFD 3010E) wall-to-wall ADI	X		
Flight Path Vector	X		
Integrated ADS-B annunciation	X		
Enhanced engine indication	X		
APV (Europe)	X		Complies with TAWS Mode 5 monitoring requirements
FMS 4.x RNAV (GPS) approach	X		
LPV approaches	X		
Increased database memory	X		
XYZ approaches	X		
Integrated RAIM	X		
FMS 4.2 RF legs (curved approach)	X		
RNP 1/RNP 2/RNP 4	X		
FMS runway depiction on SVS	X		
LPV (EASA APV)	X		
Beyond N73 and S60	X		
WAAS GPS	X		Enables ADS-B and LPV/APV
ADS-B (V2) transponder update	X		V2 is also known as DO 260B
IFIS Version 6 electronic charts (chart link)* **	X		
Synthetic Vision System on PFD	X		
Optional runway database		X	Requires subscription to database
XM WX Satellite Weather		X	Requires additional hardware
ARINC graphical weather		X	Requires the purchase of the data link option
IMS-3500		X	
Second FMS/GPS		X	
TCAS II		X	
VHF data link		X	Growth for CPDLC
HF-9000 high-frequency radio		X	
Airshow 500		X	
MFD video		X	i.e., FLIR or security camera
Corporate Aircraft Service Program (CASP)		X	

*For Premier 1A, IFIS Version 6 is a baseline feature for aircraft already equipped with IFIS-5000.

**For Premier 1, IFIS-5000 certification is still pending. STC approval expected during the first quarter of 2019. Additional costs may apply.

Take your investment beyond the mandates

Pro Line 21™ displays bring much more than synthetic vision. Featuring integrated ADS-B Out annunciations and enabling Satellite Based Augmentation System approaches in Europe.

ADS-B Out (mandate January 2020)

Complies with the latest standards for worldwide acceptance

NextGen is transitioning from ground-based to space-based tracking, enabling more aircraft to fly more efficient routes with closer spacing.

WAAS capable GPS

Unlock NextGen airspace with a WAAS update

WAAS is the technology that enables precision RNAV GPS approaches, LPV and the ADS-B Out mandate. Now is the time to update.



Synthetic vision – the new standard

Fly with increased confidence at night, or in any weather

- ▶ Always know where you are relative to nearby terrain
- ▶ Stay oriented with your landing runway*, simply and visually
- ▶ See where your airplane is going with Flight Path Vector

*Runway depiction requires an additional SVS database.

Flight Management System

Taking advantage of the latest routes and terminal procedures requires the latest in FMS technology

- ▶ Saves time and money by enabling LPV approaches
- ▶ Uses GPS as primary means of navigation

RNP

DME/DME RNP-0.3 NA.

PROVO, UTAH AL-683 (FAA) 15176

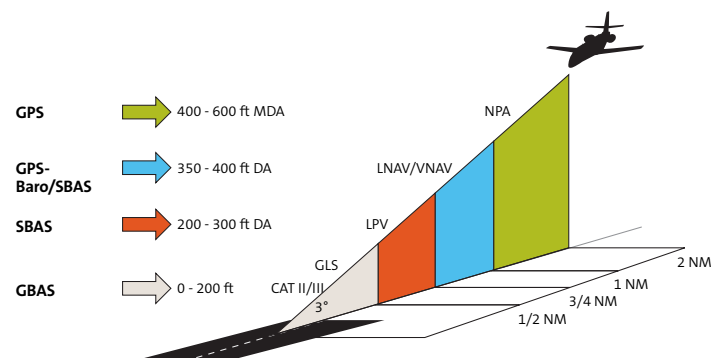
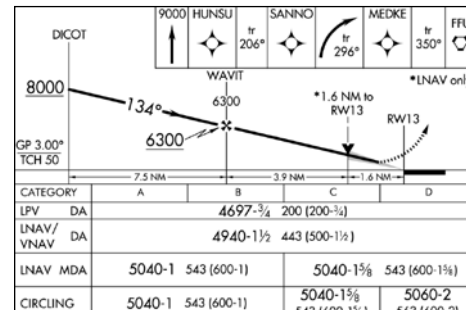
WAAS CH 97307 W13A	APP CRS 134°	Rwy Idg 8599 TDZE 4497 Apt Elev 4497	RNAV (GPS) RWY 13 PROVO MUNI (PVU)
--------------------	--------------	--------------------------------------	------------------------------------

▼ For uncompensated Baro-VNAV systems, LNAV/VNAV NA below -23°C (-9°F) or above 40°C (104°F). DME/DME RNP-0.3 NA. Circling NA east of Rwy 18 and 31.

MISSED APPROACH: Climb to 9000 direct HUNSU and on track 206° to SANNO and right turn on track 296° to MEDKE and on track 350° to FFU VORTAC and hold.

- ▶ Adds XYZ approaches
- ▶ Automatically shares takeoff and arrival data with IFIS and SVS
- ▶ More precision approaches available at more airports

LPV



- ▶ More than 4,000 LPV approaches available in the United States and continuing to grow

Without SBAS, you are restricted to the NPA approach minimums.

Options

Aircraft Information Manager (AIM)

Never worry about finding a USB stick – have your databases delivered directly to the aircraft

The day of databases being out of date, or of trying to remember where you left the USB stick you used for database updates, is gone. With the IMS-3500 and AIM, Rockwell Collins will deliver the database directly to the aircraft, send you a text message when the database is ready and, with a couple of keystrokes, transfer it to the FMS or IFIS as required.

Data link (VHF)

Sends your FAA filed flight plan directly to the aircraft



Second FMS/GPS

For those mission-critical situations where backup is important

High-frequency (HF) radio

Rockwell Collins is the industry leader in HF radios

- ▶ A cost-effective solution that provides aircraft with worldwide communication capabilities
- ▶ Full-frequency HF system permits direct tuning of any of 280,000 frequencies between 2.0 and 29.9999 MHz in 100 Hz steps when operated in the discrete frequency mode
- ▶ Discrete frequency mode provides USB, UD, AM equivalent, CW, LSB and LD operation. The 99 user-programmed channels can be programmed to operate in any of these modes.
- ▶ Tuned directly from CDU

Integrated EFB (IFIS)

Rockwell Collins' Pro Line 21 IFIS helps pilots focus on flying. It integrates common EFB functions (e.g., charts, graphical weather and enhanced maps) into the Pro Line 21 suite.

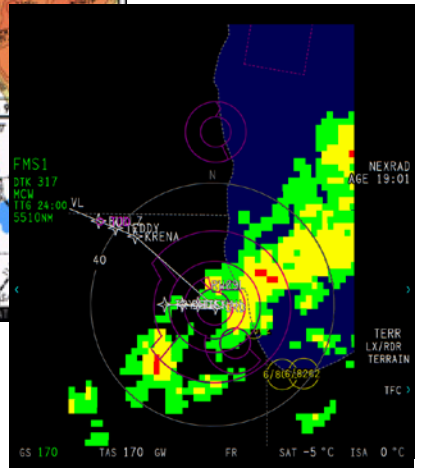
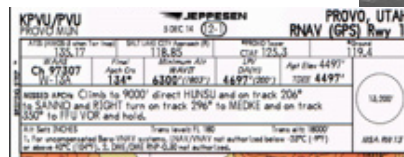
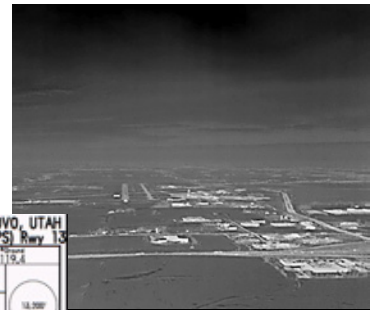
With this integration, the FMS automatically shares flight-plan data with the IFIS. This enables automated chart selection, presenting aircraft position on chart, overlaying the flight plan on graphical weather and much more. Pilots have greater situational awareness while reducing their workload, compared with federated EFBs.

- ▶ Ownship on chart
- ▶ SIDS, STARs, approach, airport charts
- ▶ XM WX Satellite Weather®
- ▶ Enhanced maps with airways and intersections
- ▶ Geopolitical boundaries
- ▶ Chart link

Graphical weather



Lightning. SIGMETs. METARS.





Your total solution.

Make the most of your avionics upgrade and enhance your operations by including Rockwell Collins' ARINCDirect™ flight support services.

- > Comprehensive flight planning
- > Seamless cabin connectivity
- > Award-winning International trip support
- > Flexible ARINCDirect Flight Operations System (FOS®)



Learn how our personalized flight support can make managing your operations easier, start to finish.

rockwellcollins.com/arincdirect



Cabin solutions

Make every flight more enjoyable with cabin options such as our Airshow® moving maps. Follow your flight in real time. Explore your destination or other global points of interest. Go mobile with the Airshow Mobile application for iPad® and Android™ tablets.

CASP™ and services

Our Corporate Aircraft Service Program (CASP™) Essential is a cost-effective choice for services that keep you on wing while enhancing your aircraft's resale value. Designed for aircraft with lower annual flight hours, CASP Essential provides aircraft availability and budget predictability.

Building trust every day.

Rockwell Collins delivers innovative aviation and high-integrity solutions that transform commercial and government customers' futures worldwide. Backed by a global network of service and support, we are deeply committed to putting our solutions to work for you, whenever and wherever you need us. In this way, working together, we build trust. Every day.

For more information, contact:

Rockwell Collins
400 Collins Road NE
Cedar Rapids, Iowa 52498
+1.319.295.4085
csmarketing@rockwellcollins.com
rockwellcollins.com