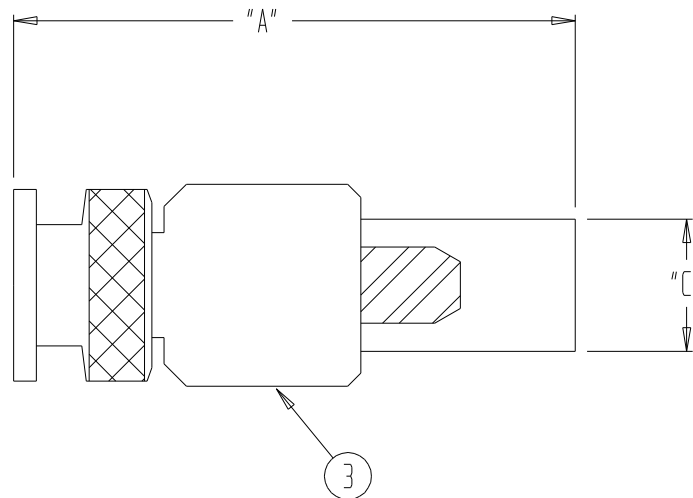
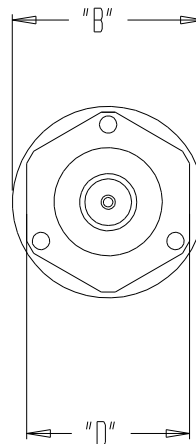


THIS DOCUMENT AND THE INFORMATION IT CONTAINS IS THE PROPERTY OF EMTEQ INC. AND MAY NOT BE USED IN ANY WAY WITHOUT THE EXPRESS WRITTEN CONSENT OF EMTEQ INC.

REV	REVISION	DATE	ER #	INTL
G	CLARIFY CALLOUT OF GOLD CRIMP TUBE	12/13/2007	7849	VML
H	ADD -225 OPTION TO PARTS LIST	07/08/2009	9904	VML
J	UPDATE "A" DIMS FOR 165-1, 205-1, 340-1	09/08/2009	10104	VML
K	CHANGE P/N, ITEM 5, HEATSHRINK	10/29/2009	10252	VML

DIMENSIONAL INFORMATION

PART NO.	"A"	"B"	"C"	"D"	ASSY INSTRUCTIONS
SMS130-1	1.22 (31.0)	0.30 (7.6)	0.22 (5.6)	0.38 (9.7)	ES-105-1
SMS165-1	1.30 (33.0)	0.42 (10.7)	0.25 (6.4)	0.38 (9.7)	ES-105-1
SMS195-1	1.22 (31.0)	0.42 (10.7)	0.25 (6.4)	0.38 (9.7)	ES-105-1
SMS205-1	1.30 (33.0)	0.42 (10.7)	0.30 (7.6)	0.38 (9.7)	ES-105-1
SMS225-1	1.22 (31.0)	0.42 (10.7)	0.30 (7.6)	0.38 (9.7)	ES-105-1
SMS240-1	1.22 (31.0)	0.42 (10.7)	0.30 (7.6)	0.38 (9.7)	ES-105-1
SMS340-1	1.56 (39.6)	0.42 (10.7)	0.39 (9.9)	0.38 (9.7)	ES-105-7



SPECIFICATIONS:

- ELECTRICAL
 IMPEDANCE: 50 OHMS
 FREQUENCY RANGE: 0 TO 11 GHZ
 VOLTAGE RATING: 500 V RMS
 DIELECTRIC WITHSTANDING VOLTAGE: 1,500 V RMS
 INSULATION RESISTANCE: 5,000 MEGOHMS MIN

- MECHANICAL
 TERMINATION STYLE: INNER CONTACT - SOLDER
 OUTER CONTACT - CRIMP
 TEMPERATURE RANGE: -65° C TO +165° C
 FINISHES:
 BODY FINISH: PROPRIETARY NICKEL
 CONTACT FINISH: GOLD PLATED PER MIL-G-45204
 DESIGNED IN ACCORDANCE WITH MIL-C-39012 STANDARDS.

SMS	340-1	240-1	225-1	205-1	195-1	165-1	130-1	PART NUMBER	DESCRIPTION	ITEM
								29-174-2	DURABLE HEATSHRINK	5
	1							ATUM 1/2 BLK		
			1					29-100-12		
							1	29-140-4		
	1							29-100-68		
		1						29-100-63		
							1	29-140-2	CRIMP TUBE	4
				1				29-137-2		
							1	29-138-2		
								29-100-4/29-100-74		
			1					09-10005		
	1							09-216-1		
		1		1				09-134-1		
							1	02-501-8	BODY	3
						1	1	09-134-2		
			1					06-803-2		
	1							06-317-2		
		1		1				06-803-2	CONTACT	2
							1	06-296-4		
					1	1		06-803-8		
		1	1	1				15-469-4		
							1	15-469-10	INSULATOR(REAR)	1
	1							15-469-5		
					1	1		15-469-3		

PARTS LIST

MATERIAL	SCALE	SIZE B	DATE 07/09/2001	EMTEQ 5349 S. EMMER DRIVE NEW BERLIN, WI 53151 (888) 679-6170
	TOLERANCES UNLESS NOTED .XX = ± .03 .XXX = ± .010 ANGLES ± 1°		DRAWN A. SWENSON DESIGNED	
FINISH	CAD GENERATED AND MAINTAINED DRAWING -- DO NOT SCALE		CHECKED <i>[Signature]</i> 11/02/2009	PLUG, SMA, STRAIGHT CONNECTOR
	APPROVED T. FORST 01/11/2010		CAGE CODE DWG # 06WH3 SMSXXX-1	
NOTICE -- ALL CHANGES TO THIS DOCUMENT ARE CONTROLLED BY EMTEQ INC / UNLESS OTHERWISE STATED, ALL REPRODUCTIONS OF THIS DOCUMENT ARE NOT CONTROLLED BY EMTEQ INC				SHT 1 OF 1 FILE: SMSXXX-1.prt