

THIS DOCUMENT AND THE INFORMATION IT CONTAINS IS THE PROPERTY OF EMTEQ INC. AND MAY NOT BE USED IN ANY WAY WITHOUT THE EXPRESS WRITTEN CONSENT OF EMTEQ INC.

REV	REVISION	DATE	ER #	INTL
K01	ADD FLAGNOTE 2, ADD -488-2, CHG DIM INFO FOR 410-2	08/16/2010	11164	VML

DIMENSIONAL INFORMATION

PART NO.	"A"	"B"	"C"	ASS'Y INSTRUCTIONS
NFS130-2	1.75 (44.5)	0.63 (16.0)	0.22 (5.6)	ES-105-25
NFS165-2	1.77 (45.0)	0.63 (16.0)	0.25 (6.4)	ES-105-9
NFS195-2	1.69 (42.9)	0.63 (16.0)	0.25 (6.4)	ES-105-9
NFS205-2	1.77 (45.0)	0.63 (16.0)	0.30 (7.6)	ES-105-9
NFS240-2	1.69 (42.9)	0.63 (16.0)	0.30 (7.6)	ES-105-9
NFS295-2	1.81 (46.0)	0.63 (16.0)	0.39 (9.9)	ES-105-8
NFS340-2	1.62 (41.2)	0.63 (16.0)	0.39 (9.9)	ES-105-8
NFS400-2	1.88 (47.8)	0.63 (16.0)	0.48 (12.2)	ES-105-8
NFS410-2	1.81 (46.0)	0.63 (16.0)	0.51 (12.95)	ES-105-6
NFS488-2	1.94 (49.3)	0.63 (16.0)	0.428 (10.87)	ES-105-29
NFS500-2	1.81 (46.0)	0.63 (16.0)	0.56 (14.2)	ES-105-6

SPECIFICATIONS:

- 1) ELECTRICAL
 IMPEDANCE: 50 OHMS
 FREQUENCY RANGE: 0 TO 4 GHZ
 VOLTAGE RATING: 1,500 V RMS
 DIELECTRIC WITHSTANDING VOLTAGE: 5,000 V RMS
 INSULATION RESISTANCE: 5,000 MEGOHMS MIN

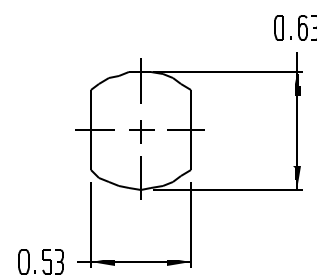
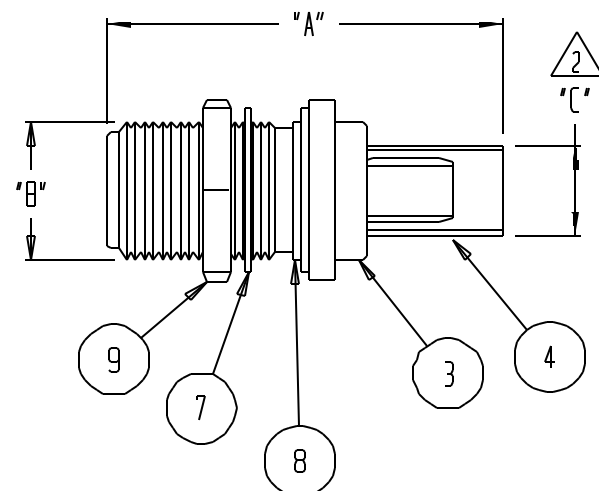
- 2) MECHANICAL
 TERMINATION STYLE: INNER CONTACT - SOLDER
 OUTER CONTACT - CRIMP
 TEMPERATURE RANGE: -65° C TO +165° C
 FINISHES:
 BODY FINISH: PROPRIETARY NICKEL
 CONTACT FINISH: GOLD PLATED PER MIL-G-45204

DESIGNED IN ACCORDANCE WITH MIL-C-39012 STANDARDS.
 MAX PANEL THICKNESS 0.320" (8.128mm)

NOTES:

- 1 WHEN USING RG-142 & RG-400 USE THE GOLD CRIMP TUBE SUPPLIED.
 WHEN USING PFLX200-XXX USE THE GOLD CRIMP TUBE SUPPLIED.
 WHEN USING PFLX195-XXX USE THE SILVER CRIMP TUBE SUPPLIED.

- 2 DIMENSION "C" IS AN INSIDE DIAMETER



NFS#	500-2	488-2	410-2	400-2	340-2	295-2	240-2	205-2	195-2	165-2	130-2	PART NUMBER	DESCRIPTION	ITEM
												13-100-13	HEX NUT	9
												10-100-82	GASKET	8
												32-100-8	LOCK WASHER	7
												ATUM 1/2 BLK	DURABLE HEATSHRINK	6
												29-174-4		
												29-174-2	(INNER) TUBE	5
												29-109-11		
												29-142-4	CRIMP TUBE	4
												29-100-56		
												29-100-74/29-100-4		
												29-140-2		
												29-140-4		
												29-138-2		
												29-137-2		
												29-100-92		
												29-100-68		
												29-141-2		
												29-100-63	BODY	3
												29-142-2		
												46-548-28S		
												46-513-11BS		
												09-162-2		
												09-162-3		
												09-164-2		
												09-162-1		
												09-166-1		
												06-684-6		
												06-423-20	CONTACT	2
												06-684-4		
												06-423-5		
												06-423-7		
												06-684-2		
												06-423-9		
												06-423-13		
												15-345-7		
												15-469-8		
												15-469-4		
												15-469-5	INSULATOR (REAR)	1
												15-345-2		
												15-469-3		
												15-469-10		
												15-345-3		

MATERIAL	SCALE	NTS	SIZE	B	DATE	8/25/99	EMTEQ 5349 S. EMMER DRIVE NEW BERLIN, WI 53151 (888) 679-6170
	FINISH	TOLERANCES UNLESS NOTED	.XX = ± .03	.XXX = ± .010	ANGLES ± 1°	DRAWN	
		CAGE CODE		06WH3	DWG #		NFSXXX-2
		SHT		1	OF		1

NOTICE -- ALL CHANGES TO THIS DOCUMENT ARE CONTROLLED BY EMTEQ INC. / UNLESS OTHERWISE STATED, ALL REPRODUCTIONS OF THIS DOCUMENT ARE NOT CONTROLLED BY EMTEQ INC.