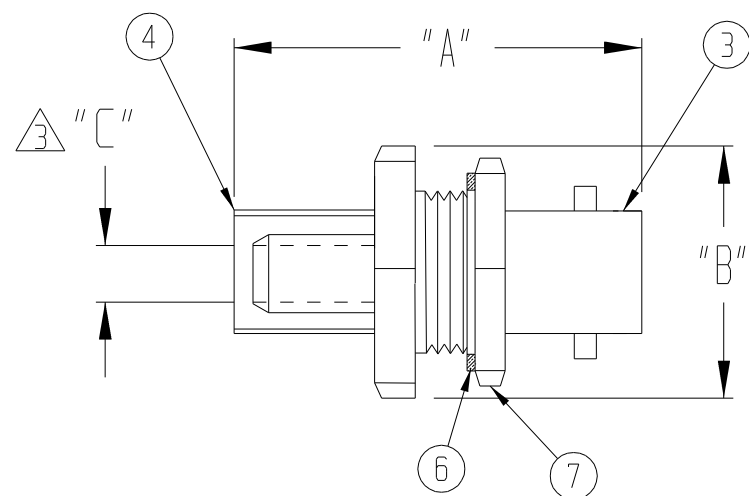


THIS DOCUMENT AND THE INFORMATION IT CONTAINS IS THE PROPERTY OF EMTEQ INC. AND MAY NOT BE USED IN ANY WAY WITHOUT THE EXPRESS WRITTEN CONSENT OF EMTEQ INC.

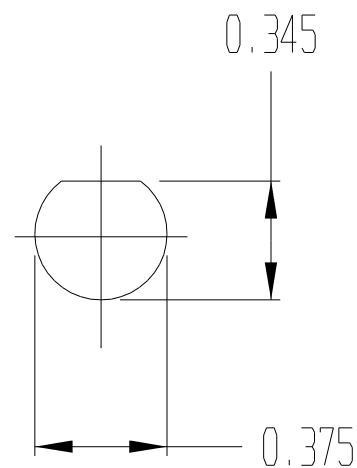
REV	REVISION	DATE	ER #	INTL
A00	RELEASED TO PRODUCTION	01/25/2010	10359	VML
A01	UPDATED DIMENSIONAL CALL OUTS	03/02/2010	10607	VML

DIMENSIONAL INFORMATION

PART NO.	"A"	"B"	"C"	ASS'Y INSTRUCTIONS
MBFS125-075-2	1.28 (32.5)	0.438 (11.2)	0.093 (2.36)	ES-105-62
MBFS175-075-2	1.20 (30.5)	0.438 (11.2)	0.118 (3.0)	ES-105-62
MBFS190-075-2	1.20 (30.5)	0.438 (11.2)	0.159 (4.0)	ES-105-62
MBFS275-075-2	1.20 (30.5)	0.438 (11.2)	0.193 (4.9)	ES-105-63



RECOMMENDED TORQUE SETTING: 30 IN LBS.



MOUNTING HOLE

SPECIFICATIONS:

- ELECTRICAL
 - IMPEDANCE: 75 OHMS
 - FREQUENCY RANGE: 0 TO 4 GHZ
 - VOLTAGE RATING: 500 V RMS
 - DIELECTRIC WITHSTANDING VOLTAGE: 1,500 V RMS
 - INSULATION RESISTANCE: 5,000 MEGOHMS MIN
- MECHANICAL
 - TERMINATION STYLE: INNER CONTACT - SOLDER
OUTER CONTACT - CRIMP
 - TEMPERATURE RANGE: -65° C TO + 165° C
 - FINISHES:
BODY FINISH: PROPRIETARY NICKEL
CONTACT FINISH: GOLD PLATED PER MIL-G-45204

DESIGNED IN ACCORDANCE WITH MIL-C-39012 AND MIL-STD-348 STANDARDS.

INNER CONNECTOR DIMENSION

1	1	1	1	29-174-2	SHRINK TUBE	8
1	1	1	1	13-100-73	HEX NUT	7
1	1	1	1	32-100-16	LOCKWASHER	6
1	1	1	1	10-102-3	O-RING	5
1				29-100-155	CRIMP TUBE	4
	1			29-100-162		
		1		29-100-49		
			1	29-140-2	BODY	3
1				60-539-4		
	1			60-539-3		
		1		60-539-2	CONTACT	2
			1	60-539-1		
1				06-1490-8		
	1			06-1490-6	INSULATOR (REAR)	1
		1		06-1490-4		
			1	06-1490-2		
1				15-469-26	INSULATOR (REAR)	1
	1			15-469-11		
		1		15-469-6		
			1	15-469-19		
275-075-2	190-075-2	175-075-2	125-075-2	PART NUMBER	DESCRIPTION	ITEM

LIST OF MATERIAL

MATERIAL	SCALE	SIZE B	DATE 12/01/2009	EMTEQ 5349 S. EMMER DRIVE NEW BERLIN, WI 53151 (888) 679-6170
	FINISH	TOLERANCES UNLESS NOTED .XX = ± .03 .XXX = ± .010 ANGLES ± 1°	DRAWN V. LEX DESIGNED	
CAD GENERATED AND MAINTAINED DRAWING -- DO NOT SCALE			CHECKED <i>[Signature]</i> 02/01/2010	JACK, BULKHEAD BNC CONNECTOR
NOTICE -- ALL CHANGES TO THIS DOCUMENT ARE CONTROLLED BY EMTEQ INC. / UNLESS OTHERWISE STATED, ALL REPRODUCTIONS OF THIS DOCUMENT ARE NOT CONTROLLED BY EMTEQ INC.			APPROVED T. FORST 02/01/2010	CAGE CODE 06WH3 DWG # MBFSXXX-075-2 SHT 1 OF 1

FILE: MBFSXXX-075-2.prt