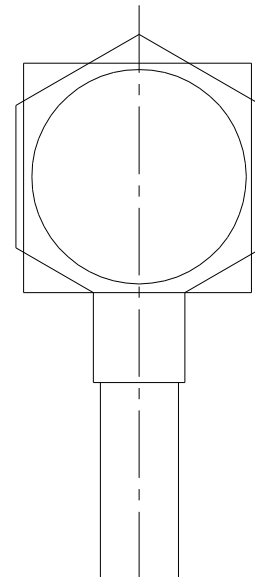
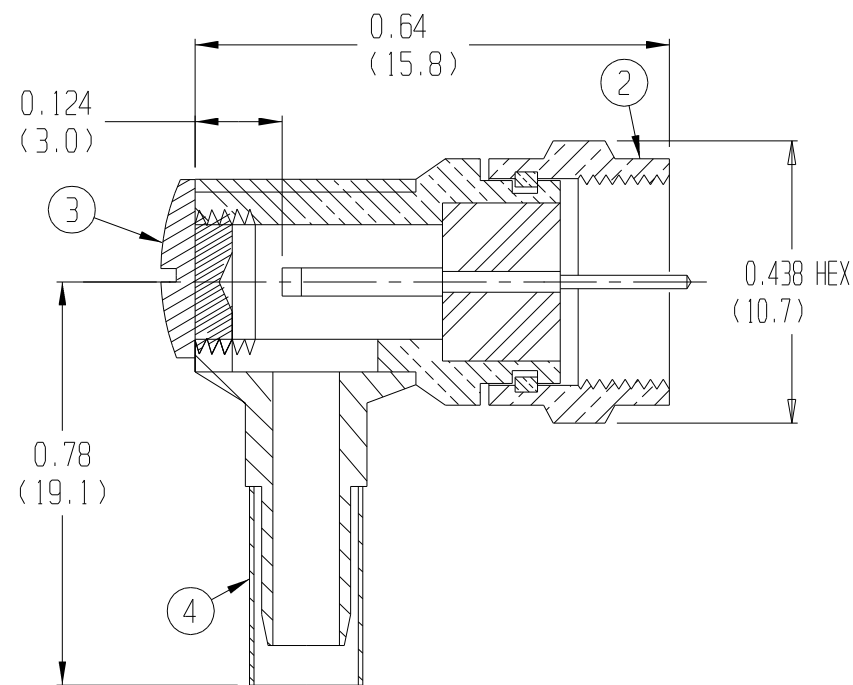


THIS DOCUMENT AND THE INFORMATION IT CONTAINS IS THE PROPERTY OF EMTEQ INC. AND MAY NOT BE USED IN ANY WAY WITHOUT THE EXPRESS WRITTEN CONSENT OF EMTEQ INC.

REV	REVISION	DATE	ER #	INTL
A	ADD CABLE ASSY INSTRUCTIONS	01/23/2004	3602	VML
B	CHANGE P/N OF ITEM 5, HEATSHRINK	10/29/2009	10252	VML

CABLE TYPE	HEX SIZE	P/N	SOLDER TEMPERATURE
PFLX175-075-XX	B	M22520/5-43	700-750 ° F (371-398 ° C)



ES-105-31  
CABLE ASSEMBLY INSTRUCTIONS  
1.) STRIP CABLE PER DIMENSIONS. DO NOT KNICK THE BRAID OR CENTER CONDUCTOR. SLIDE CRIMP TUBE ONTO CABLE AND PUSH BACK OUT OF WAY BEFORE REMOVING MATERIALS.

2.) DO NOT REMOVE THE ALUMINUM MYLAR FOIL SHIELD FROM THE DIELECTRIC.

3.) SLIDE BACK ADHESIVE HEAT SHRINK AND ANY OTHER LABELS OVER THE CABLE AT THIS TIME.

4.) FLARE END OF CABLE BRAID BY ROTATING CABLE DIELECTRIC. SLIDE CABLE INSULATOR ONTO CENTER CONDUCTOR UP AGAINST DIELECTRIC.

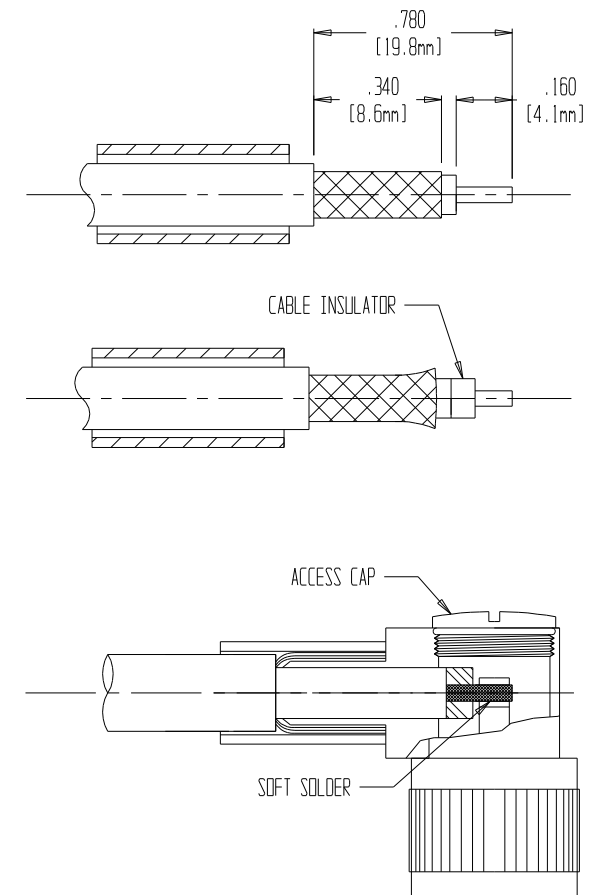
5.) SOLDER CENTER CONDUCTOR INTO SLOT IN CONTACT. DO NOT OVERHEAT AND SWELL CABLE DIELECTRIC. SEE CHART FOR RECOMMENDED SOLDER TEMPERATURES.

6.) SLIDE CRIMP TUBE OVER BRAID & UP AGAINST CONNECTOR BODY. CRIMP USING APPROPRIATE HEX SIZE CRIMPING TOOL.

7.) THREAD ON ACCESS CAP AND TIGHTEN.

\* SPECIAL NOTE: WHEN USING RG-142 AND RG-400 USE THE GOLD CRIMP TUBE SUPPLIED.

WHEN USING THE PFLX195-100 CABLE USE THE SILVER TUBE.



SPECIFICATIONS:

1) ELECTRICAL

IMPEDANCE: 75 OHMS  
FREQUENCY RANGE: 0 TO 2 GHZ  
VOLTAGE RATING: 500 V RMS  
DIELECTRIC WITHSTANDING VOLTAGE: 1,500 RMS  
INSULATION RESISTANCE: 5,000 MEGOHMS MIN.

2) MECHANICAL

TERMINATION STYLE: INNER CONTACT - SOLDER/CRIMP  
OUTER CONTACT - CRIMP  
TEMPERATURE RANGE: -65° C TO +165° C  
FINISHES:  
BODY FINISH: PROPRIETARY NICKEL  
CONTACT FINISH: GOLD PLATED PER MIL-G-45204

DESIGNED IN ACCORDANCE WITH MIL-C-39012 STANDARDS.

1	29-174-2	DURABLE HEATSHRINK	5
1	29-100-49	CRIMP TUBE	4
1	07-120-2	CAP	3
1	75-317-1BS	BODY SUB#	2
1	15-469-6	INSULATOR	1
FMR175-075-2	PART NUMBER	DESCRIPTION	ITEM

PARTS LIST

MATERIAL	SCALE NONE	SIZE B	DATE 04/02/2002	<p>5349 SOUTH EMMER DRIVE NEW BERLIN, WI 53151 (888) 679-6170</p>
FINISH	TOLERANCES UNLESS NOTED		DRAWN L. LUGO	
	.XX = ± .03 .XXX = ± .010 ANGLES ± 1°		DESIGNED	
CAD GENERATED AND MAINTAINED DRAWING -- DO NOT SCALE			CHECKED <i>[Signature]</i> 11/02/2009	<p>CABLE PLUG, RIGHT ANGLE, CRIMP</p>
APPROVED B. KOJIS 01/11/2010		CAGE CODE 06WH3	DWG # FMR175-075-2	
NOTICE -- ALL CHANGES TO THIS DOCUMENT ARE CONTROLLED BY EMTEQ INC / UNLESS OTHERWISE STATED, ALL REPRODUCTIONS OF THIS DOCUMENT ARE NOT CONTROLLED BY EMTEQ INC				<p>SHT 1 OF 1</p> <p>FILE: FMR175-075-2.prt</p>