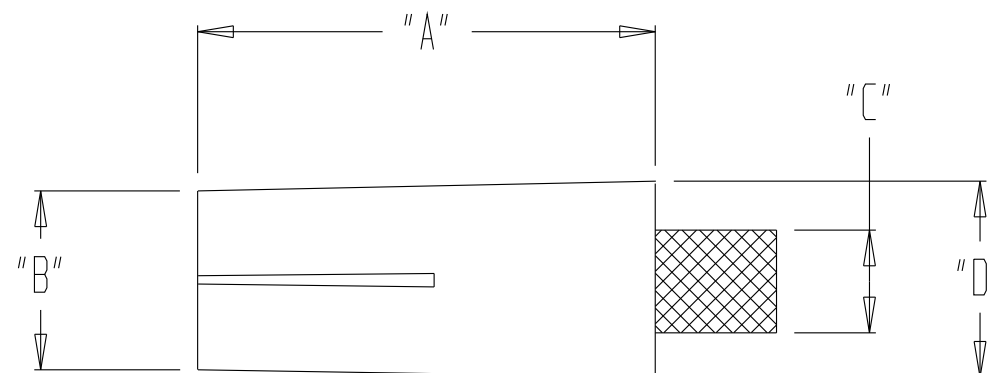


THIS DOCUMENT AND THE INFORMATION IT CONTAINS IS THE PROPERTY OF EMTEQ INC. AND MAY NOT BE USED IN ANY WAY WITHOUT THE EXPRESS WRITTEN CONSENT OF EMTEQ INC.

| REV | REVISION | DATE | ER # | INTL |
|-----|------------------------------------|------------|-------|------|
| H | ADDED GOLD CRIMP TUBE P/N | 02/27/2007 | 6479 | CCE |
| J | CLARIFY CALLOUT OF GOLD CRIMP TUBE | 12/12/2007 | 7849 | VML |
| K | ADDED CONTACT 195-1 | 3/18/2008 | 8217 | LLP |
| K01 | ADD OPTION A65190-075-1 | 12/23/2010 | 11491 | LLP |

DIMENSIONAL INFORMATION

| PART NO. | "A" | "B" | "C" | "D" | ASSY INSTRUCTIONS |
|--------------|-------------|------------|-------------|------------|-------------------|
| A65130-1 | 0.80 (20.3) | 0.27 (6.9) | 0.15 (3.8) | 0.28 (7.1) | ES-105-12 |
| A65165-1 | 0.80 (20.3) | 0.27 (6.9) | 0.25 (6.4) | 0.28 (7.1) | ES-105-12 |
| A65175-075-1 | 0.80 (20.3) | 0.27 (6.9) | 0.22 (5.6) | 0.28 (7.1) | ES-105-12 * |
| A65190-075-1 | 0.80 (20.3) | 0.27 (6.9) | 0.21 (5.2) | 0.28 (7.1) | ES-105-12 * |
| A65195-1 | 0.80 (20.3) | 0.27 (6.9) | 0.175 (4.4) | 0.28 (7.1) | ES-105-12 |



SPECIFICATIONS:

1) ELECTRICAL

IMPEDANCE: 50 OHMS, * 75 OHMS
 FREQUENCY RANGE: 0 TO 2 GHZ
 VOLTAGE RATING: 325 V RMS
 DIELECTRIC WITHSTANDING VOLTAGE: 750 V RMS
 INSULATION RESISTANCE: 5,000 MEGOHMS MIN

2) MECHANICAL

TERMINATION STYLE: INNER CONTACT - SOLDER
 OUTER CONTACT - CRIMP
 TEMPERATURE RANGE: -65° C TO +165° C

FINISHES:

BODY FINISH: GOLD PLATED PER MIL-G-45204
 CONTACT FINISH: GOLD PLATED PER MIL-G-45204

DESIGNED IN ACCORDANCE WITH ARINC 600 STANDARDS.

| QTY | DESCRIPTION | ITEM | | | | | |
|-----------|-------------|-------------------|-------|-------|-------------|-------------|------|
| | --DELETED-- | 5 | | | | | |
| 1 | 29-100-162 | CRIMP TUBE | | | | | |
| 1 | 29-100-4 | | | | | | |
| 1 | 29-100-74 | | | | | | |
| | 29-140-4 | | | | | | |
| | 29-140-2 | | | | | | |
| | 29-100-49 | | | | | | |
| | --DELETED-- | | | | | | |
| | 29-138-2 | | | | | | |
| 1 | 75-915-5BS | | | | | | |
| 1 | 02-977-2 | | BODY | | | | |
| | 09-197-3 | | | | | | |
| | 09-197-1 | | | | | | |
| | 09-197-2 | | | | | | |
| 1 | 06-707-6 | CONTACT | | | | | |
| | 06-707-4 | | | | | | |
| 1 | 06-707-2 | | | | | | |
| | 15-202-10 | INSULATOR(REAR) | | | | | |
| | 15-469-10 | | | | | | |
| | 15-469-6 | | | | | | |
| 1 | 15-469-3 | | | | | | |
| A65 195-1 | 190-1* | 175-1* | 165-1 | 130-1 | PART NUMBER | DESCRIPTION | ITEM |

PARTS LIST

| | | | | |
|---------------------------|--|---|---|---|
| MATERIAL | SCALE | SIZE B | DATE 8/26/99 | 5349 S. EMMER DRIVE NEW BERLIN, WI 53151 (888) 679-6170 |
| FINISH | TOLERANCES UNLESS NOTED .XX = ± .03 .XXX = ± .010 ANGLES ± 1° CAD GENERATED AND MAINTAINED DRAWING -- DO NOT SCALE | DRAWN J. HERMAN DESIGNED CHECKED A. LIPOWSKI 12/24/2010 APPROVED T. FORST 12/28/2010 | CAGE CODE 06WH3 DWG # A65XXX-1 SHT 1 OF 1 | |
| CONTACT, SIZE 5, COAXICON | | | | FILE: A65XXX-1.prt |